



OUTCOME BUDGET 2012-13

**Government of Odisha
Department of Water Resources**

C O N T E N T S

Sl. No.	Aspect	Page No.
1	Executive Summary	1-4
2	Chapter-I Introduction	5-17
3	Chapter-II Outcome Budget, 2012-13 Statement (Plan & Non-Plan), Annexures	18-91
4	Chapter-III Reforms Measures & Policy Initiatives	92-94
5	Chapter-IV Past performance of Programmes and schemes	95-96
6	Chapter-V Financial Review	97
7	Chapter-VI Gender and SC/ST Budgeting	98-100

L I S T O F T A B L E S

List of Tables	Contents	Page No.
Chapter-I		
Table-1.1	Hydrological Information System Network	11
Table-1.2	Status of MIPs under RR&R scheme (as on 31.01.2012)	14
Table-1.3	Status of Check Dams (as on 31.01.2012)	15
Table-1.4	Status of Borewell Scheme (as on 25.02.2012)	16
Chapter-II		
i)	Outcome Budget-2012-13 (Statement of Outlays & Outcome / Targets : State Plan 2012-13)	19-29
ii)	Outcome Budget-2012-13 (Statement of Outlays & Outcome / Targets : Non-Plan : 2012-13)	30-31
iii)	Abstracts showings schemes, Outlay & Quantifiable delilverables / Physical Outputs & Annual Plan : 2012-13	32
iv)	Project wise Plan Outlay for 2012-13	33-48
Chapter-IV		
Table-4.1	Physical & Financial Status as on December – 2011	95-96
Chapter-V		
Financial Review (State Plan / Non-Plan / CSP)		97
Chapter-VI		
Table-6.1	Fund Flow to TSP Component	98-99
Table-6.2	Fund Flow to SCSP Component	99-100

Executive Summary

*** **

The “Outcome Budget” of the Department of Water Resources is intended to convert the “outlays” into “outcomes” by planning the expenditure, fixing appropriate targets and quantifying the deliverables. The document also highlights the status of ongoing and new schemes implemented through the Department along with the physical and financial targets set for the financial year 2012-13.

2. The Outcome Budget 2012-13 broadly consists of the following chapters:

- Chapter-I** : Brief introductory note on the functions, organizational setup, planning and policy framework, programmes / schemes implemented by the Department.
- Chapter-II** : Details of financial outlays, projected physical outputs & projected outcomes for 2012-13 under Plan and Non-plan schemes in a tabular format.
- Chapter-III** : Details of reforms measures and policy initiatives taken by the Department.
- Chapter-IV** : The physical and financial achievement against financial outlay and quantifiable / deliverable/ physical output of 2011-12 up to December 2011.
- Chapter-V** : Financial review covering overall trends in expenditure vis-à-vis Budget Estimates and Revised Estimates in the previous year, Budget Estimates of the Current Financial Year.
- Chapter-VI** : Highlights the outlays provided for the schemes benefiting Women, ST and SC groups along with the corresponding physical output

Implementation, Monitoring & Evaluation Mechanism:

The Department of Water Resources (DOWR) lays considerable emphasis on systematic and sustained monitoring of irrigation projects executed under different schemes. Two monitoring units are functioning in DOWR and office of Engineer-in-Chief (EIC), Water Resources for centralized project monitoring. The DOWR monitoring unit is headed by a Joint Secretary and is assisted by one Deputy Director, one Deputy Secretary and one Under Secretary with other ministerial staff. Similarly, monitoring unit at EIC office is headed by a Director in the rank of Superintending Engineer and is assisted by other technical personnel such Deputy Directors in the rank of Executive Engineers and Assistant Directors in the rank of Assistant Engineers. At the project level, the monitoring works are being looked after by Asst. to Chief Engineer in charge of the project and is assisted by other sub-ordinate staff. Conventional monitoring mechanism such as field visits, review meetings and periodic report and returns are in place for monitoring of projects.

1. **Data Compilation & Transmission:** The data/ information from field level are being sent to the Monitoring Directorate in the EIC office on monthly/quarterly /annual basis. The Monitoring Directorate reviews the documents/ information of field offices and submits a consolidated report to the Department and other higher offices.
2. **Review Meetings:** The State level Plan review meetings with Project Chief Engineers/ Land acquisition Officers are being held regularly under the Chairmanship of Principal Secretary. Various critical issues/ problems/ bottlenecks of the projects are discussed and important decisions are taken in the Plan Review meeting. Senior officers from regional CWC also attend the review meeting. Apart from that, progress of projects is also reviewed from time to time by Hon'ble Chief Minister and Other Senior Officers of the State and Central Government. Similarly, at project level, review meetings are held regularly under the Chairmanship of the Chief Engineer in charge of the project.
3. **Field Visits:** Senior officers from DOWR including the Principal Secretary and Engineer-in-Chief regularly make field visits to monitor the progress of the work. They discuss problems with field functionaries and issue necessary instructions for smooth implementation of projects. Besides, officials from the Funding Agencies viz. Ministry of Water Resources/ NABARD/World Bank/ ADB etc. also regularly visit to the projects to assess the progress of the work.
4. Inbuilt monitoring mechanism in the guidelines of each scheme ensures that the objectives of the schemes are achieved.
5. The Department of Water Resources is implementing e-Governance in a phased manner using Information and Communication Technology (ICT) in order to improve efficiency in office procedures, information delivery mechanism and ensuring transparency in the system. The initiatives taken are given below.
 - a. Local Area Network (LAN) has been established for data transfer between DOWR and Engineer-in-Chief office.
 - b. The Department has developed its website www.dowrorissa.gov.in for dissemination of various information which are useful for the Department officials and the public.

- c. Division Automation system has been made functional on a pilot basis in two divisions.
6. **Evaluation:** Concurrent Evaluation Studies for system improvement works done through World Bank funded OWRCF projects have been made by WALMI. OUAT has also been entrusted with performance evaluation of drainage work. There is a proposal to evaluate the performance of flood control works executed under centrally funded FMP schemes. Benchmarking of irrigation projects are being done by the department to measure the performance of a project and practices against the counterparts. These works are carried out on a phased manner in 14 major & medium projects. The evaluation report has been published and there is a programme to extend the studies to all major, medium and minor irrigation projects.

Public Information System

1. Creating awareness about the programmes of the Department:

- Annual Report and Annual Activity report containing physical and financial achievements of schemes are being published each year for wide circulation for information of the public and Peoples representatives.
- Pani Panchayat samachar is being published quarterly basis for wide publicity of programme. To spread the concept of participatory irrigation management through Pani Panchayat, among the farmers, for better involvement, Pani Panchayat fortnight is being observed throughout the state every year during the period 26th December to 9th January.

2. Ensuring transparency in the implementation of the programmes at the field level.

- The Department has developed its website www.dowrorissa.gov.in for display of information useful for public.
- To bring about reform in the procurement process, an “e-procurement mission” has been formed in Works Department by bringing in officers from all the engineering departments. The website with the URL <http://www.tendersorissa.gov.in> has been launched containing activities ranging from invitation of N.I.T/ I.F.B to award of contract. This will help in cutting down the processing time, eliminate possibility of tampering, and introduce uniform evaluation. A Programme Management Unit (PMU) is in place to supplement the efforts of the mission. There is a help desk to meet the queries of the officers of the implementing departments and the bidders. A toll free telephone bearing No.18003456765 and an e-mail ID ‘eprohelpdesk@gmail.com’ is in place to meet the queries. Department of Water Resources are making use of the e-procurement process in a big way.
- State Quality Monitoring Cell is engaging Quality Monitors (non-government individual experts in the field of Quality control & Assurance) to inspect the works on sample basis to ensure that quality Management system is operating satisfactorily in the field. Wherever there is some doubt on quality or test results, third party agencies are entrusted with the task of carrying out tests at the expense of contractor.

3. Encouraging participation of the people in the development process:

Participatory Irrigation Management (PIM) has been recognized all over the world as a tool for improving irrigation management along with sustainability of the system. The operation and maintenance of the distribution systems were handed over to Pani Panchayats. Legal status has been provided to Pani Panchayats through enactment of Odisha Pani Panchayat Act-2002 & the Odisha Pani Panchayat Rule-2003. To provide necessary support to operationalise the PIM concept in the State, a new Directorate of Command Area Development and Participatory Irrigation Management (CAD&PIM) has been established during 2007-08 under Department of Water Resources. This Directorate will make concerted effort to scale up the CAD & PIM activities in all completed and ongoing projects in the State effectively. Grant-in-aid is being given to the Pani Panchayats for O&M of minors and sub-minors canals handed over to them on achievement of 75% of membership,

4. Promoting the concept of social audit and accountability

In some schemes guidelines, social audit is mandatory. Steps are being taken to promote social audit other ongoing schemes in phased manner. To begin with, social audit will be implemented in the CSP scheme Repair, Renovation & Restoration (RRR).

* * * * *

Chapter-I

Introduction

*** **

1. Function:

The Department of Water Resources has the mandate to plan, develop, utilize and manage State's water resources efficiently and effectively. To achieve this objective, the Department formulates Water Policies & Water Plans and undertakes execution, operation and maintenance of irrigation projects, exploration and regulation of ground water, flood control and drainage development, industrial water supply and command area development activities. The subject assigned to the Department as per Odisha Government Rule of Business is as follows.

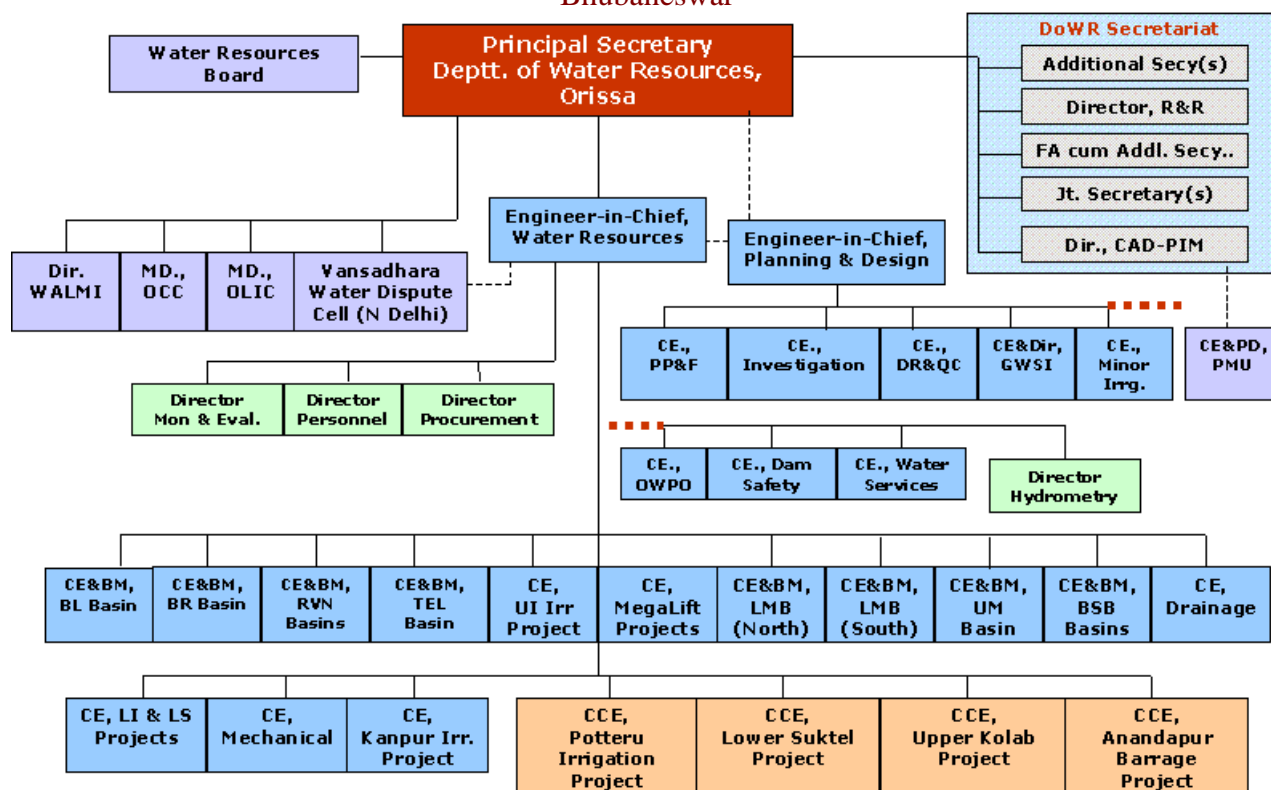
- Administration of various Navigation, Embankment and Drainage Act and Rules made there under.
- Water for irrigation and navigation canal, drainage embankments and water storage and all works connected therewith.
- Maintenance of Indian Waterways.
- Construction and maintenance of building required solely for the administration of canals and embankments of Major and Medium Irrigation.
- Flood control and river taming works.
- All matters relating to civil construction and maintenance of Dam projects except Upper Indravati Hydro-electric Project upto the point of generation in coordination with Energy Deptt.
- All matters relating to land acquisition, land reclamation and resettlement in connection with the projects pertaining to the Department.
- Command Area Development.
- Excavation, execution and maintenance of Minor Irrigation as defined by Govt. of India from time to time and Tank Projects.
- Lift Irrigation Corporation.
- Odisha Pani Panchayats.

2. Organization:

The Department is headed by the Principal Secretary. The functions of the Department are carried out through following organizations /wings, public sector undertakings.

- Major & Medium
- Minor (flow)
- Ground Water Survey & Investigation
- Command Area Development
- Odisha Lift Irrigation Corporation Ltd
- Water & Land Management Institute
- Odisha Construction Corporation Ltd. (OCC)

Organization Chart
Department of Water Resources, Orissa,
Bhubaneswar



3. Schemes/ Programme :

Accelerated Irrigation Benefit Programme (AIBP):

Objective: This scheme is being implemented with the assistance of Government of India since 1996. The primary objectives of AIBP are to accelerate implementation of large irrigation projects which are beyond the resource capability of the State Governments, expeditious completion of the projects which were in advanced stage of completion & to realize bulk benefits from irrigation projects.

Fund Flow Arrangement: AIBP was started as Central Loan Assistance (CLA). Initially 50% of the project outlay was provided as CLA and the balance 50% was met by State. During 1999-2000, Government of India classified the States as General and Special Category with a view to minimize the regional imbalance of irrigation development. The Special Category States were provided CLA on 3:1 (Centre: State) and General Category States on 2:1 (Centre: State). During 2002-03, funding pattern was relaxed. The States agreed to undertake economic reforms measure under irrigation have been extended CLA in the ratio of 4:1 (Centre: State) for General Category and 1:0 (Centre: State) for Special Category. During 2004-05, funding pattern was changed, 30% of the CLA to non-Special Category States and 90% CLA for Special Category States has been converted into grant. From 2005-06, only grant is being provided and states were to raise the loan portion through market borrowing. In 2006-07, the disbursement pattern was modified again and central assistance is being provided in the form of central grant for 90% of project cost in case of special category states, projects benefiting drought prone area, tribal area and flood

prone area and 25% of the project cost in case of non-special category states. The balance cost of the project as the state's share is to be arranged by state government from its own resources or market borrowing. At present, projects in KBK districts and tribal areas of our State are availing 90% central assistance as grant and projects in other areas are availing 25% central assistance grant.

Implementation Status: 19 major & medium irrigation projects with latest estimated cost of Rs11339.22 crore to create irrigation potential of 443.42 thousand hectare and to stabilize 61.62 thousand hectares have been taken up under this programme. Besides, 81 surface flow minor irrigation projects with latest estimated cost of Rs 218.70 crore to create additional irrigation potential of 23.959 thousand hectare have been included in this programme. From the above, seven major & medium irrigation projects and 43 minor flow projects were completed. By the end of December 2011, an amount of Rs 6620.40 crore under major and medium and Rs174.22 crore under minor irrigation has been spent and additional irrigation potential of 134.91 thousand hectare (Major & medium-118.38 th.ha, Minor flow- 16.53 th ha) has been created and stabilization of 61.62 thousand hectares have been done. During 2012-13, budget provision of Rs1078.00 crore (Major & Medium-Rs1050.00 cr, Minor flow-Rs28.00 crore) has been made for creation of additional irrigation potential of 38.43 thousand hectare (major & medium- 37.03 th.ha, minor flow-1.40 th.ha).

Project Monitoring Mechanism: A comprehensive physical and financial periodical monitoring of major / medium projects is carried out by Central Water Commission / Ministry of Water Resources with emphasis on quality control. The release of subsequent installments of grant is based on physical and financial progress of the work. The latest technique such as Remote Sensing is also used by the Government of India to monitor the progress of works. Monitoring of the minor irrigation (MI) projects is done by the State Government. These projects would also be monitored periodically on sample basis by Central Water Commission. Besides, the State Government monitors the physical and financial progress of the projects on monthly, quarterly, and annual basis.

Rural Infrastructure Development fund (RIDF):

Objective : Government of India in the Budget of 1995-96 announced the scheme for setting up Rural Infrastructure Development fund (RIDF) to be operationalised by NABARD. This fund has emerged as a popular and effective scheme for financing rural infrastructure projects. The main objective of the scheme is to assist State Governments for the completion of ongoing rural infrastructure projects and also taking up new irrigation, flood control & drainage projects etc.

Fund Flow Arrangement: NABARD is providing loan assistance to these projects. Mobilisation advance / Start up advance @ 20% of the RIDF Loan sanctioned under the projects is released to the State Governments on conveying acceptance of the terms & conditions of sanction by the State Government, before incurring expenditure on the projects for procurement and supply of materials, etc. Loans are released on reimbursement basis against the actual expenditure incurred for execution of sanctioned projects. RIDF loans are released to the State Governments by the Regional Office of NABARD.

Implementation Status:

- a. **Major & Medium Sector :** Total 86 projects under major & medium Irrigation sector have been approved under RIDF-I to RIDF- XVII to create additional irrigation potential of 109.63 thousand hectare. By the end of December 2011, 39 projects were completed and additional irrigation potential of 71.498 thousand hectare has been created. During 2012-13, budget provision of Rs 90.00 crore has been made with a target to create additional irrigation potential of 7.70 thousand hectare.
- b. **Minor irrigation (flow):** Total 527 projects sofar have been sanctioned to create additional irrigation potential of 128.78 thousand hectare under this scheme. By the end of December 2011, 181 projects have been completed and additional irrigation potential of 81.85 thousand hectare has been created. During 2012-13, budget provision of Rs 42.00 crore has been made with a target to create additional potential of 12.00 thousand hectare.
- c. **Lift Irrigation:** For development of lift irrigation in Hirakud command area, total 67 projects to create irrigation potential of 1654 hectare have been sanctioned up to 2011-12. By the end of December 2011, 54 projects have been completed and irrigation potential of 1402 hectares has been created. During 2012-13, it has been proposed to install 15 LIPs with irrigation potential of 300 hectare. Budget provision of Rs 2.00 crore has been made for the above work during 2012-13.
- d. **Flood Control :** Total 80 flood control and 19 road projects with an estimated cost of Rs 380.37 crore has been taken up under this programme. By end of December 2011, 22 flood control projects and 6 road projects have been completed an amount of Rs 154.49 crore has been spent. An outlay of Rs 74.00 crore has been proposed in the budget for 2012-13 for execution of ongoing and new projects.
- e. **Drainage Work:** Total 83 drainage with an estimated cost of Rs 319.86 crore has been taken up under this programme. By end of December 2011, 39 drainage projects have been completed an amount of Rs 152.89 crore has been spent. An outlay of Rs 57.00 crore has been proposed in the budget for 2012-13 for execution of ongoing and new projects.

Project Monitoring Mechanism: NABARD lays considerable emphasis on systematic and sustained monitoring of the projects sanctioned under RIDF. With a view to ensuring smooth implementation of projects, designated officers from the Head Office and Regional Offices at the state level and the District Development Managers at the district level undertake regular field visits to monitor the progress of projects and discuss the problems with the field level functionaries. Recently, NABARD has introduced a system of holding quarterly meetings with the Secretaries and Heads of the Department implementing the projects. NABARD also organizes capacity building workshops for the Government staff working in various line departments connected with RIDF projects.

Japan Bank of International Co-operation (JBIC):

Objective: Government of Japan is providing ODA (Official Development Assistance) loan through JICA to developing countries at low rates of interest and with long repayment periods to develop and improve the economic and social infrastructure for sustainable economic development.

Implementation Status: So far 3 Major Projects namely Upper Indravati Irrigation Project (RD 15.00 to 52.00 Km.), Upper Kolab irrigation Project (RD14.00 to 41.78 Km) & Rengali Left Bank Canal (RD 29.177 to 71.313 km.) have been sanctioned under this scheme. Out of three sanctioned projects, two projects namely Upper Indravati and Upper Kolab have been completed. At present, Rengali Left Bank Canal (RD 29.177 to 71.313 Km.) with an cost of Rs 1074.02 crore is under progress since 1997 to create additional irrigation potential of 29.176 thousand hectare. By end of December 2011, an amount of Rs 1013.18 crore has been spent and additional irrigation potential of 25.81 thousand hectare has been created. During 2012-13, budget provision of Rs 52.50 crore has been made to the complete the balance work as well as to take up the new works beyond 71.313 km of the project.

Project Monitoring Mechanism: JICA is reviewing the progress of work in periodic interval.

Odisha Integrated Irrigated Agriculture & Water Management Investment Project (OIAWMIP):

Objective: The Odisha Integrated Irrigated Agriculture and Water Management Investment Project (OIAWMIP) was conceptualized with the support of the Asian Development Bank (ADB) to optimise the state irrigation potential. The project aims to enhance the productivity and sustainability of the existing major, medium, and minor irrigation projects, alongwith strengthening and empowering water users associations (WUAs) and allied institutions like the Water and Land Management Institute (WALMI).

Fund Flow Mechanism: Asian Development Bank is providing loan for this project on reimbursement basis against the expenditure incurred. The cost sharing is in the ratio of 70:27.4:2.6 (ADB: State: WUAs).

Implementation Status: The estimated cost of the Project is Rs 1084.19 crore (US \$ 267.7 million). The project will simultaneously stabilize 2.18 lakh hectare of existing ayacut and create 0.06 lakh hectare additional irrigation potential by modernizing 15 existing major, medium projects namely Taladanda canal, MCII, Machagoan canal, HLC-I, Jajpur canal, Patamudai canal, Gohira, Remal, Sunei, Kansabahal, Ramiala, Kanjhari, Bankabaal, Khadkhai, Nesa and rehabilitating 1400 lift irrigation projects. The project will be implemented in four tranches over a period of 8 years. Loan agreement for tranche-I has been signed during 2008-09. In the first tranche, two major, 3 medium projects viz. MCII(land acquisition etc.), Taladanda Canal, Gohira, Remal, Sunei and 300 lift irrigation projects have been included. The tendering activities of major and medium irrigation projects of Tranche-I and DPR preparation of 100 LI projects is in progress. The Tranche-II work covering four major and three medium projects will be taken up during 2012-13. An outlay of Rs 150.00 crore has been proposed during 2012-13 under this scheme.

Project Monitoring Mechanism: ADB is reviewing the progress of work in periodic interval.

Flood Management Programme (FMP):

Objective : River management, Flood Control, Anti-erosion, Drainage Development, Flood Proofing works in the critical areas in the country with assistance from Government of India.

Fund Flow Mechanism: Government of India is providing central assistance for the schemes in the ratio of 75:25 (Central share: State Share) to General category States. For Special category States, central assistance is being provided in the ratio of 90:10 (Central Share: state Share). Our State has been considered as a General category State under FMP.

Implementation Status:

Flood Control Works: This scheme is being implemented with 75% central assistance from Government of India. 29 Flood control projects with estimated cost of Rs 135.75 crore have been taken up under this scheme. By end of December 2011, 28 projects were completed & 1 project is in progress .An outlay of Rs 29.00 crore has been proposed in the budget 2012-13 for these works.

Drainage Works: This scheme is being implemented with 75% central assistance from Government of India. 41 drainage projects with estimated cost of Rs 103.08 crore have been taken up under this scheme. By end of December 2011, an amount of Rs 70.42 crore has been spent and 20 projects were completed. 9 projects are progress. An outlay of Rs 4.00 crore has been proposed in the budget 2012-13 for these works.

Project Monitoring Mechanism: A comprehensive physical and financial periodical monitoring is carried out by Central Water Commission / Ministry of Water Resources with emphasis on quality control. The release of subsequent installments of grant is based on physical and financial progress of the work.

Hydrology Project (HP-II):

Objective : To provide reliable data sets for long term planning, design and management of water resources and water use systems and research activities with improvement in the infrastructure for data collection. HP-II is a follow on of HP-I aimed to extend and promote the sustained and effective use of the Hydrological Information System by all potential users concerned with water resources planning and management, formulation of design aids and development of design support system for early flood warning, drought monitoring and management.

Fund Flow Mechanism : The project is funded by World Bank and implemented nationwide. Odisha is one of the implementing states in this project.

Implementation Status: The latest estimated cost of Odisha portion work is Rs 27.51 crore (surface water component –Rs 13.28 crore and ground water component Rs 14.23 crore). Under Hydrology Ph-I, 56 river gauge stations, all of which are equipped with rain gauges and 9 Full Climatic Stations (FCS) have been constructed. The data collected are processed through softwares like SWDES and HYMOS and exchanged with CWC, IMD for inter agency data validation. Basin wise Hydrological information system network developed through different sources are given in the following table.

Table-1.1
Hydrological Information System Network

Basin	Standard Rain Gauge Station (nos)		ARG (nos)	RGS (nos)		FCS (nos)	WQ/Sed laboratories (nos)	
	HP	Non-HP		G.D	WL		Sed.	WQ+Sed
Subernarekha	2	-	1	2	-	-	1	1
Budhabalanga	2	-	-	-	-	1	1	1
Baitarani	2	7	1	2	-	1	1	1
Brahmani	4	-	-	2	2	-	1	1
Mahanadi	29	20	4	21	6	4	10	3
Rushikulya	5	2	3	5	1	1	2	1
Vamsadhara	3	5	-	3	-	1	1	1
Nagabali	2	-	-	2	-	-	2	1
Indravati	3	-	2	4	2	1	1	1
Kolab	4	-	1	3	1	-	-	-
Total	56	34	12	44	12	9	20	11

ARG -Automatic Rain Gauge, RGS-River Gauge Station, GD- Gauge Discharge,WL-Water Level,FCS-Full Climatic Station,WQ- Water Quality, Sed-Sedimentation.

Further, an integrated bathymetry system has been procured to compute the silt deposits in the major reservoirs in the State. At present, reservoir sedimentation survey work in Hirakud reservoir is under progress. Subsequently, such exercise will extend to other reservoirs of the State. Budget provision of Rs 11.15 crore (Surface water-Rs 9.50 crore, Ground water –Rs 1.65 crore) has been made during 2012-13 under this scheme.

Project Monitoring Mechanism: Periodical monitoring is being carried out by the World Bank.

Odisha Community Tank Management Project (OCTMP) :

Government of Odisha in partnership with Government of India have initiated a project to repair and rehabilitate approximately 900 minor irrigation tanks with command area of 40 ha to 2000 ha and covering 1.20 lakh ha across the state with assistance from World Bank. Meanwhile, the scope of the project has been scaled down and 320 tanks with command area of 0.60 lakh hectare are proposed under this scheme.

Objective : The project aims to improve agricultural productivity by renovating irrigation tanks and strengthening water users associations to manage the tank systems effectively.

Fund Flow Arrangement : The World Bank is funding the project and has sanctioned US\$ 95,000 for operationalization of the programme on reimbursement basis.

Implementation Status : The project will carry out rehabilitation work in about 320 tank systems covering a command area of nearly 0.60 lakh hectares, supported with an institutional framework for participatory irrigation management and livelihood development. Now, the project is being implemented on a pilot basis in 80 projects in Rayagada, Gajapati, Ganjam, Jajpur and Mayurbhanj districts. Tendering activities for 60 projects have been initiated out of which work for 54 projects have been started. An outlay of Rs 52.50 crore has been proposed during 2012-13.

Project Monitoring Mechanism : Regular monitoring of the project is carried by World Bank in respect of physical and financial progress and the outcome.

Biju Krushak Vikash Yojana(BKVY) :

Objective: To utilise the water resources potential of small streams and rivulets which can provide irrigation to the lands of tribal beneficiaries/ small and marginal farmers suitable for self-management.

Fund Flow Arrangement: Funding for execution of MIPs and LIPs in KBK districts are basically met from Special Central Assistance (SCA) received under RLTAAP. Similarly, loan assistance from NABARD is being availed under RIDF schemes for execution of MIPs and LIPs in Non-KBK districts.

Implementation Status: By end of March 2011, 5855 LIPs and 84 MIPs have been completed and additional irrigation potential of 130.25 thousand hectares (LIPs-125.60 thousand hectares, MIPs- 4.65 thousand hectares) have been created. During 2011-12, there is a target to install 1175 LIPs to create additional irrigation potential of 23500 hectare. Out of which , 641 LIPs have so far been completed and irrigation potential of 14000 hectare (OAIC- 3916 hectare, OLIC- 10084 hectare) has been created.During 2012-13, an outlay of Rs 160.00 crore (RIDF- Rs 150.00 crore, SCA –Rs 10.00 crore) has been proposed to take up 1175 LIPs with a target to create additional irrigation potential of 23.50 thousand hectares.

Project Monitoring Mechanism: Regular monitoring of the project is being carried out at each stage by the Department.

Command Area Development & Water Management (CAD&WM):

Objective : This scheme is being implemented in the State since 1976-77 with the main objective of reducing the gap between irrigation potential created and that utilized. The programme also aims at enhancing agricultural production and productivity in irrigated commands by judicious and equitable distribution of available irrigation water with active involvement of farmers through participatory irrigation management. The main components of the programme are construction of field channel, field drain, reclamation of water logged area, correction of system deficiencies, Topographical survey and farmers training.

Fund Flow Arrangement: Funding for execution the projects are being made through central assistance. The cost sharing norms for construction of field channel and reclamation of water logged areas are in the ratio of 50:40:10 (centre: state: farmers). For construction of field drain and correction of system deficiencies the cost sharing is 50:50 (centre :State) and for training it is 75:25 (centre: state) .

Implementation Status: 21 major and medium projects having CCA of 991950 hectare have been taken up under this scheme out of which eight projects have been completed. By end of March 2011, 526.427 thousand hectares of field channel and 157.35 thousand hectares of field drain have been completed. During 2011-12, it has been programmed to construct 33000 hectare of field channel and 17671 hectares of field drain, out of which field channel covering an area of 18324 hectare and field drain covering an area of 4384 hectare have been constructed up to end of December 2011. An out lay of Rs 86.00 crore has been proposed during 2012-13 with a target to construct field channel in 36638 hectares of field channel and 15835 hectares of field drain.

Project Monitoring Mechanism: A comprehensive physical and financial periodical monitoring is carried out by Central Water Commission / Ministry of Water Resources with emphasis on quality control. The release of subsequent installments of grant is based on physical and financial progress of the work.

Repair, Renovation and Restoration of Water Bodies with Domestic Support (RR&R):

Government of India has launched the scheme of Repair, Renovation and Restoration (RR&R) of Water Bodies as a State Sector scheme with domestic budgetary support.

Objective

- Comprehensive improvement of selected tank systems including restoration
- Improvement of catchment areas of tank
- Community participation of self-supporting system for sustainable management for water bodies covered by the programme.
- Ground Water Recharge
- Capacity Building of communities, user groups standing committee for panchayats and State Government / Central Government Agencies concerned with the planning, implementation and monitoring of the project.
- Increase in storage capacity of water bodies.
- Improvement in agriculture / horticulture productivity and increase in recharge of ground water in downstream areas of water bodies.
- Environmental benefits through improved water use efficiency : irrigation benefits through restoration of water bodies, supplementation of groundwater use and promotion of conjunctive use of surface and ground water.

Fund Flow Arrangement

For Special Category States (North-Eastern States including Sikkim, Himachal Pradesh, Jammu & Kashmir, Uttarakhand and undivided Koraput, Bolangir and Kalahandi (KBK) district of Orissa as well as projects benefitting drought prone / tribal / naxal-affected areas, 90 % of the project cost will be provided as Central Assistance (grant) by the Government of India and 10% of the cost by State Governments. For non-special category States 25% of the cost will be provided as Central Assistance (grant) by Government of India and 75% by State Governments. 10% of the project cost will be earmarked by State Governments for capacity building, awareness and institutional strengthening.

Implementation Status: 1761 water bodies/MIPs have been approved by Government of India under RR&R scheme during 2009-10. Out of the above, 1321 water bodies/MIPs with an estimated cost of Rs 254.33 crores have been taken up to revive 62.04 thousand hectares of irrigation potential. These projects are located in KBK districts, Naxal affected areas and drought prone areas. Funding pattern for these projects is in the ratio of 90:10 (central share: State share). By end of January 2012, 414 MIPs have been completely renovated and renovation work of remaining 907 water bodies will be completed by March 2012. District-wise status is given in the following table.

Table-1.2*Status of MIPs under RR&R scheme (As on 31.01.2012)*

District	Projects sanctioned (No)	Projects taken up (No)	Cost (in lakhs)	Expr.by 01/2012 (in lakh)	Potential to be revived (in ha)	projects comp. by 01/2012 (Nos)
Balasore	7	6	180	137.97	452	3
Bargarh	71	56	1800	1450.99	4,184	12
Bolangir	109	83	1171.92	1088.14	2,755	55
Deogarh	7	7	98.68	48.96	175	
Dhenkanal	28	26	900	681.88	3,011	4
Gajapati	51	37	600	306.83	1,151	4
Ganjam	792	579	10780	6578.66	19,035	167
Jajpur	26	22	450	396.24	892	15
Kalahandi	63	51	1513.13	1561.13	2,905	13
Kandhamal	51	35	590	270.9	1,615	5
Keonjhar	87	50	620	268.85	2,460	
Koraput	29	23	349.77	236.91	1,135	9
Malkangir	14	13	178.22	60.39	603	4
Mayurbhanj	80	63	1250	603.07	3,640	16
Nawarangpur	28	12	161.39	105.72	283	1
Nayagarh	119	79	1500	1443.67	5,816	29
Nuapada	42	35	500	427.61	2,333	24
Rayagada	37	34	1110.62	802.57	4,736	10
Sambalpur	52	47	709.32	404.87	1,576	7
Sonepur	20	18	278.08	242.88	977	11
Sundargarh	48	45	700	515.74	2,308	25
Total =	1761	1321	25441.13	17633.98	62,042	414

During 2012-13, an out lay of Rs 75.00 crores has been proposed under this scheme for clearance of dues and for taking up new projects.

Project Monitoring Mechanism- Regular monitoring of the project is to be carried out at each stage. Monitoring will be done with the association of the Standing Committee of Pani Panchayat the appropriate level

Construction of Check Dams (In-Stream Storage):

Objective : To conserve water at the end of monsoon for drinking water, ground water recharge and incidental irrigation. Preference will be given to blocks having less than 35% irrigation coverage, areas where farmers are using traditional irrigation by constructing temporary cross bunds on streams and where farmers are willing to take up O&M of the project.

Fund Flow Arrangement: Funding for execution of Check Dams in KBK districts are to be met from Special Component Assistance (SCA) and Additional Central Assistance (ACA). Similarly, State's own fund are to be utilised for execution of Check Dams in Non-KBK districts.

Implementation Status: This is new scheme and started during 2010-11. financial year. By end of January 2012, 1207 check dams have been completed and 2199 are in progress. Steps are being taken to complete at least 3000 check dams in cumulative effect by March 2012. Districtwise status of Check Dams is given below.

Table-1.3
Status of Check Dams (As on 31.01.2012)

District	A/A Accorded (Nos)	Comp (Nos)	In Progress (Nos)	Tender finalized (Nos)	Tender Received (Nos)	Tender invited (Nos)	To be tendered (Nos)
Angul	68	15	26	21	-	-	6
Balasore	211	60	150	-	-	-	1
Baragarh	334	82	252	-	-	-	-
Bhadrak	51	44	7	-	-	-	-
Bolangir	335	86	147	-	102	-	-
Boudh	116	26	90	-	-	-	-
Cuttack	219	59	68	78	12	-	2
Deogarh	76	21	17	-	21	-	17
Dhenkanal	173	39	80	51	-	-	3
Gajapati	36	3	26	-	-	7	-
Ganjam	215	81	120	14	-	-	-
Jajpur	76	33	33	5	5	-	-
Jharsuguda	51	21	2	-	25	-	3
Kalahandi	438	76	120	-	211	-	31
Keonjhar	302	27	61	80	-	-	134
Khurda	151	40	111	-	-	-	-
Koraput	157	16	16	-	37	73	15
Malkangiri	22	5	14	-	-	-	3
Mayurbhanj	230	118	112	-	-	-	-
Nowrangpur	62	25	34	-	-	-	3
Nayagarh	248	52	189	-	-	7	-
Nuapada	277	95	142	-	8	-	32
Phulbani	45	05	40	-	-	-	-
Puri	27	17	8	-	1	-	1
Rayagada	270	36	71	39	38	24	62
Sambalpur	315	65	103	-	131	-	16
Subarnapur	62	20	24	8	10	-	-
Sundargarh	233	28	120	67	-	-	18
Jagatsingpur	13	4	9	-	-	-	-
Kendrapada	15	8	7	-	-	-	-
Total	4828	1207	2199	363	601	111	347

During 2012-13, 3000 check dams are proposed to be taken up for which an outlay of Rs 216.14 crore (SCA-Rs 16.14 crore, State fund-Rs 200.00 crore) has been proposed.

Deep Borewell Scheme:

Objective: The exploitation of ground water in the State is very low. For providing irrigation by exploiting ground water through deep bore wells covering 2 hectares in

blocks having less than 35% irrigation coverage, a new scheme in line of BKVY is proposed to be taken up during the Annual Plan 2010-11.

Fund flow Arrangement : Funds are provided in the Budget of Agriculture Department under RKVY, State Plan for taking up these deep bore-wells.

Implementation Status : The scheme would be implemented through OLIC. Total 12250 borewell have been programmed. By end of 25th February 2011, drilling work of 5090 borewell has been successfully completed. Out of which 810 borewells have been handed over to beneficiaries after energisation. Steps are being taken to complete drilling work of 13000 bore wells by June 2012. District wise status of bore well is given in the table below.

Table-1.4

Status of Borewell scheme (As on 25.02.2012)

District	Programme (Nos)	Boring successful (No)	Yield Test Successful(No)	Energisation Taken up (nos)
Bolangir	1110	430	344	250
Subarnapur	498	319	224	134
Koraput	225	79	59	59
Nowrangpur	900	458	290	168
Malkangiri	370	230	170	106
Rayagada	665	191	72	45
Kalahandi	1032	487	308	255
Nuapada	525	302	175	73
Total (KBK)	5325	2496	1642	1090
Jajpur	455	120	86	63
Khurdha	676	194	136	67
Nayagarh	183	96	68	20
Sambalpur	1057	577	468	153
Bargarh	605	358	219	201
Deogarh	80	80	63	33
Mayurbhanja	799	390	364	169
Balasore	185	55	6	0
Keonjhar	835	144	65	14
Ganjam	250	25	0	0
Cuttack	200	2	0	0
Dhenkanal	200	10	5	0
Anugul	200	101	25	0
Boudh	300	119	45	0
Phulbani	250	97	51	0
Jharsuguda	200	117	64	0
Sundergarh	450	109	27	0
Total(Non-KBK)	6925	2594	1692	720
G.Total	12250	5090	3334	1810

During 2012-13, 7000 bore wells to irrigate approximately 14000 hectares of land in these blocks will be taken up. Outlay of Rs 150.00 crore has been proposed in the budget of Agriculture Department.

Mega Lift Scheme: The scheme has been launched during 2011-12 for providing irrigation to the farmers in the upland areas by lifting waters from river. Projects having irrigation command area within 500 to 2000 hectares will be taken up under this scheme. 174 sites in 15 clusters to provide irrigation to 214270 hectares has been identified in Vansadhara, Indravati, Tel, Mahanadi, Brahmani, Baitarani, Budhabalanga rivers etc. and in periphery of Hirakud & Rengali reservoirs. Consultant for coordinating power system feasibility engaged and 33 KV electricity system requirements finalized for each cluster in co-ordination with distribution companies. 68 sites in five clusters identified in 1st phase to be taken up during 2012-13 for which an outlay of Rs 150.00 crore has been proposed.

Dam Rehabilitation & Improvement Project (DRIP):

Objective : Rehabilitation and improvement of Dam Structure through proper maintenance and improve the safety and operational performance of selected existing dams.

Fund Flow Arrangement: This project will be taken up with loan assistance of World Bank.

Implementation Status: 38 dams of Odisha viz. Hirakud, Balimela, Rengali, Salandi, Upper Kolab, Budhabudhiani, Dadaraghati, Daha, Derjang, Dhanei, Kalo, Nesa, Pilasalki, Pitamahar, Salia, Sarafgarh, Satiguda(UKP), Satiguda (Malkangiri), Talasara, Ardei, Asoka Nalla, Bagjharan, Balaskumpa, Banksal, Deojharan, Jagadala, Jhumuka, Kalakala, Kanhei Nalla, Khasbahal, Laigam, Liard, Mathanpal, Padampur Nalla, Pipala Nalla, Ramaguda, Ranugaon & Sanamachakandana with an estimated cost of Rs 147.75 crores have been proposed under the project. Loan agreement was signed during December 2011. The project will commence during 2012-13 for which an outlay of Rs 11.50 cr. has been proposed.

*** **

Chapter-II

Outcome Budget: 2012-13

*** **

The exercise is primarily meant for converting financial outlays into measurable and monitorable outcome. It is a performance measurement tool that helps in better service delivery, decision making, evaluating programme performance and results & improving programme effectiveness. The Outcome Budget is also aimed at changing the outlook of the agencies entrusted with the responsibility of programme execution and implementation. The idea is to make the programme implementing agencies more result oriented by shifting the focus from “Outlays” to “Outcomes”.

The scheme-wise details, wherever necessary of the Outcome Budget for 2012-13 are indicated in the attached statement.

OUTCOME BUDGET -2012-13
STATEMENT OF OUTLAYS AND OUTCOME / TARGETS: ANNUAL PLAN 2012-13

Sl. No	Name of Scheme/ Programme	Outlay 2012-13 (in TRS)	Objective of the scheme	Quantifiable/ Deliverables Physical outputs	Project Outcomes	Process / Timelines	Remark/ Risk Factor
1	2	3	4	5	6	7	8
State Plan							
1	Accelerated Irrigation Benefit Programme (AIBP)		To complete on-going irrigation projects and to accelerate implementation of large irrigation projects in a time bound manner with a view to create additional irrigation potential and derive envisaged benefits from these projects with central assistance	Additional irrigation potential (Net) of 40200 hectare as given below. a.Major & Medium - 38800ha. b.Minor flow projects - 1400 ha.	i) To bring more and more additional cultivable area under irrigation coverage ii) Expeditious completion of major, medium & minor irrigation projects	i) Revised MOU has been signed to complete the major & medium projects in four financial year i,e by 2013-14. ii) For Minor Flow projects, Revised MOU to be signed to complete the projects by 2012-13	i) Delay in Land Acquisition ii) Rehabilitation and Resettlement work iii) Forest clearance iv) Peoples agitation v) Contractual litigation vi) Delay in completion of Railway line crossing and NH crossing
	a. Major & Medium	10500000					
	b. Minor (flow)	280000					
	c.Minor (lift)	0					
	Sub-Total (AIBP)	10780000					

Sl. No	Name of Scheme/ Programme	Outlay 2012-13 (in TRS)	Objective of the scheme	Quantifiable/ Deliverables Physical outputs	Project Outcomes	Process / Timelines	Remark/ Risk Factor
1	2	3	4	5	6	7	8
2	Rural infrastructure Development Fund (RIDF)		Completion of ongoing rural infrastructure projects and also taking up new projects under irrigation, flood control, drainage, agriculture and rural connectivity sectors with assistance from NABARD under RIDF.	Additional irrigation potential(Net) of 20000 hectare a. Major & Medium-7700 hectare b. Minor (flow) - 12000 hectare c.Lift Irr.under Hirakud- 300 hectare d.Retrieval of water logged Area 3000 ha. e.Flood protection to 5000ha of agricultural land	Infrastructure development for betterment of lively hood of rural masses and creation of additional irrigation potential	Three (3)year time period for projects sanctioned under each tranche by NABARD followed by one year grace period	i) Delay in Land Acquisition ii) Clearance of New Projects by NABARD
	a. Major & Med	900000					
	b. Minor (flow)	420000					
	c.Lift Irr.under Hirakud	20000					
	d.FC& drainage	1310000					
	Sub-Total (RIDF)	2650000					
3	Biju Krushak Vikash Yojana (BKVY)		To utilise the water resources potential of small streams and rivulets which can provide irrigation to the lands of tribal beneficiaries/ small and marginal farmers and suitable for self-management under assistance from RIDF and Special Central Assistance for KBK.	Additional irrigation potential(net) of 23500 hectare a. BKVY (RIDF)-1100 new LIPs to be taken up for creating additional irrigation potential of 22000 hectare b. BKVY (SCA) - 75 new LIPs to be taken up for creating additional irrigation potential of 1500 hectare	To bring more cultivable areas under irrigation coverage by constructing river lift and by exploiting ground water	One Year time period from the date of sanction of project under this programme	i) Energisation of Lift Points ii) Clearance of New Projects by NABARD
	LIPs under RIDF	1500000					
	LIPs under SCA	100000					
	Sub-Total (BKVY)	1600000					

Sl. No	Name of Scheme/ Programme	Outlay 2012-13 (in TRS)	Objective of the scheme	Quantifiable/ Deliverables Physical outputs	Project Outcomes	Process / Timelines	Remark/ Risk Factor
1	2	3	4	5	6	7	8
4	Instream Storage Structure (Check Dam) funded from State's own resources, ACA & SCA		To conserve water at the end of monsoon for drinking water, ground water recharge and for incidental irrigation. Preference will be given to blocks having less than 35% irrigation coverage, areas where farmers are using traditional irrigation by constructing temporary cross bunds on streams and where farmers are willing to take up O&M of the project.	Construction of 3000 check dams during current financial year. Incidental Irrigation benefit of 30000 hectare would be created	i) To meet drinking water requirement ii) Recharging ground water potential iii)Rationalise irrigation development in the State	One Year time period from the date of sanction of project under this programme. Implementation through Departmental Organisation	New Scheme, Risk factor is yet to be ascertained
	a. Major & Medium (State fund)	250000					
	b. Minor (flow)						
	i. State fund	1750000					
	ii. ACA						
	iii.SCA	161350					
	Sub-Total (Check Dam)	2161350					

Sl. No	Name of Scheme/ Programme	Outlay 2012-13 (in TRS)	Objective of the scheme	Quantifiable/ Deliverables Physical outputs	Project Outcomes	Process / Timelines	Remark/ Risk Factor
1	2	3	4	5	6	7	8
5	Externally Aided Project						
i	Rengali Left Bank Canal, RD.29.177 to 71.313 km with assistance from JICA	525000	Government of Japan is providing official development assistance (ODA) to developing countries at low rate of interest and with long repayment periods to develop and improve the economic and social infrastructure for sustainable economic development.	Completion of balance work of the project. The project will provide irrigation to 29.176 thousand hectares of cultivated land in Anugul, Dhenkanal districts	a. Expansion of Irrigation coverage b. On farm development & entry point activities	The scheme is likely to be closed by June 2012. Implementation through Departmental Organisation	Delay in Land Acquisition

Sl. No	Name of Scheme/ Programme	Outlay 2012-13 (in TRS)	Objective of the scheme	Quantifiable/ Deliverables Physical outputs	Project Outcomes	Process / Timelines	Remark/ Risk Factor
1	2	3	4	5	6	7	8
ii	Orissa Integrated Irrigated Agriculture Water Management Investment Programme (OIAWMIP) with assistance from Asian Development Bank	1500000	The project aims to modernise 15 major & medium and 1400 lift irrigation projects in four river basins for enhancing the productivity and sustainability of the existing projects and simultaneously strengthening and empowering WUAs and allied institutions like WALMI	a.Extension,Renovation & Modernisation of selected 2 major canal system MCII ,Taladanda canal & 3 medium projects viz.Gohira, Remal,Sunei are in progress during current financial year.b.Sustainable water management with PIM &IWRM.c. conduct further studies for preparation of Basin Development Plans.iv) Construction activities on Tranche-II covering four major & three medium projects to commence during current financial year	a.To optimise utilisation of irrigation potential b. Increase income and reduce poverty through productive irrigation.	The scheme has been funded by Asian Development Bank (ADB) and will continue in four tranches for a peiod of eight years comencing from 2009-10.Implementation through Departmental organisation.	Co-ordination among various departments such as Agriculture, Water Resources, Fisheries and Animal Husbandry & PR institutions

Sl. No	Name of Scheme/ Programme	Outlay 2012-13 (in TRS)	Objective of the scheme	Quantifiable/ Deliverables Physical outputs	Project Outcomes	Process / Timelines	Remark/ Risk Factor
1	2	3	4	5	6	7	8
iii	Orissa Community Tank Management Project (OCTMP) with assistance from World Bank	525000	<p>a. Renovation of tanks and realisation of full irrigation potential.</p> <p>b. To improve agricultural productivity and water users' associations to manage tank systems effectively.</p> <p>c. To create enabling legal and institutional environment to implement the solutions emerging out of participatory and demand driven processes.</p> <p>d. include the whole of the tank user community involving other users like landless farm families, livestock owners, fishermen community etc.</p>	<p>i) Extension, Renovation & Modernisation work has been implemented on pilot basis in Rayagada, Gajapati, Ganjam, Jajpur & Mayurbhanj districts.</p> <p>ii) Implementation activities initiated in 80 tanks, out of which work has been started in 54 tanks.</p> <p>iii) ERM works of 30 tanks would be completed.</p>	<p>Sustainability of the restored systems through community participation and empowerment facilitated by Support Organizations (SO)/ other agencies to have self-supporting groups at the level of water body.</p>	<p>The scheme has been funded by World Bank and will continue for a period of five years commencing from 2009-10. Implementation through Orissa Community Tank Development & Management Society (OCTDMS) and Departmental Organisation</p>	<p>Co-ordination among various departments such as Agriculture, Water Resources, Fisheries and Animal Husbandry & PR institutions</p>

Sl. No	Name of Scheme/ Programme	Outlay 2012-13 (in TRS)	Objective of the scheme	Quantifiable/ Deliverables Physical outputs	Project Outcomes	Process / Timelines	Remark/ Risk Factor
1	2	3	4	5	6	7	8
iv	Hydrology Project Phase-II with World Bank assistance		Sustained and effective use of the Hydrological Information System with water resources planning and management.	Surface Water: i) Conducting Training Programme-30 nos ii) Study Tour-7 nos iii) Awareness programme-12 nos iv) construction of administrative building Ground Water: i) Installation of Piezometer & Renovation existing Piezometer ii) Procurement of Audiovisual equipment iii) Procurement of Software & hardwares for database management	(a) Improved data accessibility for Implementing Agencies (b) Improved tools for water resources planning and management. (c) Improved data system and tools for management of flood and drought.	Project now under implementation through World Bank funding. To be completed in 2012-13. Implementation through Director, Hydrometry and Director, GWS&I	Co-ordination between central and state agencies.
	a. Surface Water	95000					
	b. Ground Water	16500					
	Sub-Total (HP-II)	111500					

Sl. No	Name of Scheme/ Programme	Outlay 2012-13 (in TRS)	Objective of the scheme	Quantifiable/ Deliverables Physical outputs	Project Outcomes	Process / Timelines	Remark/ Risk Factor
1	2	3	4	5	6	7	8
v	Dam Rehabilitation & Improvement Programme (DRIP) with World Bank assistance	115000	a. Rehabilitation and improvement of Dam structure through proper maintenance b. To improve the safety and operational performance of selected existing dams of the participating states	Total 38 dams included in this programme of which Rehabilitation of 5 dams are to be taken up.	a. Better operation and functioning of Dams b. Assurance of safety of Dams	Agreement signed	Work will be taken up during current financial year
	Total (EAP)	2776500					
6	Projects funded from States own resources		To take up pre-project activities Renovation work of major and medium projects, other ancillary works.	a.Payment of NPV, initiation of Land Acquisition, Infrastructure development of Pipeline Projects b.Renovation of selected distribution system of major & medium projects. c Additional irrigation potential of 4580 ha for minor flow projects	a. Shorten the project cycle through completion of pre-project activities. Separate funding arrangement is firmed up. b.To optimise utilisation of irrigation potential	Completion of pre-project activities for the projects funded by other agencies. Payment of decretal dues. Rehabilitation and renovation of old projects	
	a. Major & Medium	1011335					
	b. Minor (flow)	90000					
	c. GWS&I	6000					
	d.Flood Control & drainage	1200000					
	Sub-Total (State fund)	2307335					

Sl. No	Name of Scheme/ Programme	Outlay 2012-13 (in TRS)	Objective of the scheme	Quantifiable/ Deliverables Physical outputs	Project Outcomes	Process / Timelines	Remark/ Risk Factor
1	2	3	4	5	6	7	8
7	Repair, Renovation and Restoration of Water Bodies with Domestic Support		Comprehensive improvement of selected water bodies including catchment treatment and command areas development, increase instorage capacity of water bodies, ground water recharge, improvement in agriculture/horticulture productivity, development of tourism, cultural activities and increased availability of drinking water.	i) 1321 water bodies to be completed in all respect	Revival of derelict and partly derelict water bodies and realise their full irrigation potential	Scheme taken up during 11th Five year Plan funded by Government of India. Three year time period is allowed for completion of each project from the date of sanction.	
	Minor flow	750000					
	Sub-Total (RR&R)	750000					

Sl. No	Name of Scheme/ Programme	Outlay 2012-13 (in TRS)	Objective of the scheme	Quantifiable/ Deliverables Physical outputs	Project Outcomes	Process / Timelines	Remark/ Risk Factor
1	2	3	4	5	6	7	8
8	Command area Development & Water Management		i) To bridge the gap between irrigation potential created and that utilised through micro level infrastructure development and efficient farm water management	i) construction of field channel- 36638hectare ii) Construction of field drain -15835hectare iii)Reclamation of Water logged area-500 hectare iv) Conducting Farmers training Programme-158 nos v)Topographical survey - 55192hectare	i) Optimum utilisation of water resources ii) Enhance agricultural production and productivity ii) Improve socio-economic conditions of the farmers.	Programme started by GOI since 1976.There is no strict time schedule for completion of the project.One New project will be taken up on completion of one ongoing project	Donation of land by farmers in the command area for taking up field channel & field drain work.
	CAD&WM	860000					
	Sub-Total (CAD&WM)	860000					
9	Flood Management Programme		River management, Flood Control, Anti-erosion, Drainage Development, Flood Proffing works in the critical areas in the country with central assistance	i) Flood protection for 2000 ha of agricultural land ii) Retrieval of Water Logged Area 3000 hectare	The output would help in reducing damages due to flood, river bank erosion and coastal erosion. Two year time period allowed for completion	Scheme taken up during 11th Five year Plan funded by Government of India.Two year time period is allowed for completion of each project from the date of sanction.Implementation through Departmental organisation	i) Clearance of New Projects Under FMP ii) Delay due to contractual problem
	a.Ongoing Projects	330000					
	b.Pipeline project						
	Sub-Total (FMP)	330000					

Sl. No	Name of Scheme/ Programme	Outlay 2012-13 (in TRS)	Objective of the scheme	Quantifiable/ Deliverables Physical outputs	Project Outcomes	Process / Timelines	Remark/ Risk Factor
1	2	3	4	5	6	7	8
10	Megalift Projects	1500000	To provide irrigation to the upland areas by lifting water from river	i) 68 New Megalift projects to be taken up during current financial year. Irrigation Potential would be created during 2013-14	To bring more cultivable areas under irrigation coverage by constructing mega river lift projects	Two Year time period from the date of sanction of project under this programme	New Scheme, Risk factor is yet to be ascertained
11	Deep Borewell Scheme	Budget Provision made in Agril sector	To provide irrigation to the farmers by exploiting ground water in non-irrigated hard rock areas of the State	i) 7000 projects to be taken up during current financial year ii) Creation of Additional irrigation potential of 14000 hectare	To bring more cultivable areas under irrigation coverage	One Year time period from the date of sanction of project under this programme. Implementation through Departmental Organisation	New Scheme, Risk factor is yet to be ascertained
	Total	25715185					

OUTCOME BUDGET -2012-13
STATEMENT OF OUTLAYS AND OUTCOME / TARGETS
NON- PLAN : 2012-13

Sl. No	Name of Scheme/ Programme	Outlay 2012-13 (in TRS) (Non-Salary Deliverables,Physical outputs)	Objective of the scheme	Quantifiable/ Deliverables Physical outputs	Projected Outcomes	Process / Timeliness	Remark/ Risk Factor
1	2	3	4	5	6	7	8
MAJOR & MEDIUM							
1	Works	2583241	Annual Maintenance of different components such as repairing of Main canals, distribution systems, Silt clearance, Roads,Buildings, Head works and other ancilliary works of Major & Medium Projects including 13FC grant	Normal & Special repair works.Targets could not be quantified	Continued activity	Annual Repair & Maintenance	
	Sub-Total	2583241					
FLOOD CONTROL & DRAINAGE							
1	Works	989976	Annual Maintenance of erosion and embankment works	Normal & Special repair works.Targets could not be quantified	Continued activity	Annual Repair & Maintenance	
	Sub-Total	989976					

Sl. No	Name of Scheme/ Programme	Outlay 2012-13 (in TRS) (Non-Salary Deliverables, Physical outputs)	Objective of the scheme	Quantifiable/ Deliverables Physical outputs	Projected Outcomes	Process / Timeliness	Remark/ Risk Factor
1	2	3	4	5	6	7	8
Minor Irrigation							
1	Works	956090	Annual Maintenance of different components such as repairing of Main canals, distribution systems, Silt clearance, Roads, Buildings, Head works and other ancilliary works of Major & Medium Projects including 13FC grant	Normal & Special repair works. Targets could not be quantified	Continued activity	Annual Repair & Maintenance	
	Sub-Total	956090					
CAD&WM							
1	Works	69000	Annual Maintenance of Field Channel & Field Drain	Normal & Special repair works. Targets could not be quantified	Continued activity	Annual Repair & Maintenance	
	Sub-Total	69000					
	Total	4598307					

Abstracts showings schemes, outlay and quantifiable deliverables/ physical outputs in Annual Plan 2012-13

Sl.No	Name of Scheme	Financial outlay(TRS)	Quantifiable deliverables/physicals
1	AIBP	10780000	Irr.Pot-38430 hectare
2	RIDF	2650000	Irr.Pot-20000 hectare
3	BKVY	1600000	Irr.Pot-23500 hectare
4	In-stream storage structure(Check Dam)	2161400	3000 check dam
5	Rengali Left Bank Canal with assistance from JICA	525000	Completion of balance work & new work of the project
6	OIIAWMIP with assistance from ADB	1500000	2major canal system, 3medium projects and 300 lift irrigation projects
7	OCTMP with World Bank assistance	525000	Modernization of 60 tanks
8	State fund	2307335	Irr. Pot-4580 hectare
9	Repair, Renovation & Restoration of Water Bodies	750000	Completion of all ongoing projects
10	Command Area Development & Water Management	860000	Construction of field channel-36638 hectare Construction of field drain-15835 hectare
11	Flood Management Programme	330000	i) Flood protection for 2000 ha agricultural land ii) Retrieval of 3000 ha. of waterlogged land
12	Megalift Projects	1500000	68 new projects to be taken up
13	Hydrology Project	111500	
14	Borewell scheme	Provision made in Agril. Budget	Irr.Pot -14000 hectare

N.B :

- Creation of additional irrigation potential of 102280 hectare
- Retrieval of waterlogged area of 3000 hectare
- Construction of field channel of 36638 hectare
- Construction of field drain of 15835hectare

*** **

PROJECTWISE PLAN OUTLAY FOR 2012-13

Sl. No.	Project Name	Benifitted Area (District/ State)	Outlay during 2012-13 (in TRs)	Quantifiable deliverables, output if any	Remarks
1	2	3	4	5	6
I	Major & Medium Irrigation				
A	Externally Aided Projects				
1	Rengali Left Bank Canal (JBIC assisted project)	Dhenkanal, Jajpur	525000	--	--
2	National Hydrology Project (Ph-II)	Whole State	95000	--	--
3	Orrisa Intigrated Irrigated Agriculture & Water Mangement Project (OIIAWMP)	Whole State	1500000	--	--
4	DRIP	Whole State	115000	--	--
	TOTAL - EAP - (A)		2235000		
B	AIBP Assisted Projects				
	NON-KBK PROJECTS				
1	Rengali Right Bank Canal	Dhenkanal, Cuttack	1000000	--	--
2	Subarnarekha	Mayurbhanj & Balasore	3000000	--	--
3	Integrated Anandapur Barrage	Keonjhar, Bhadrak, Balasore	1000000	--	--
4	Cheligada	Ganjam & Gajapati	150000	--	--
5	Kanpur Irrigation Project	Keonjhar	1500000	--	--
6	Monjore Stage-II	Angul	100000	--	--
7	Rukura	Sundergarh	400000	--	--
8	Survey, Investigation & Research (HR Divisin Burla-Rs.100 lakh) Detail list in Annexure-I	Whole State	40000	--	--
	Sub-Total		7190000		
	KBK PROJECTS				
9	Upper Indravati Irrigation	Kalahandi	900000	--	--
10	Lower Indra (EIC Estt-Rs.200 lakh)	Nuapada, Bolangir	1250000	--	--
11	Lower Suktel	Bolangir	200000	--	--

Sl. No.	Project Name	Benifitted Area (District/ State)	Outlay during 2012-13 (in TRs)	Quantifiable deliverables, output if any	Remarks
1	2	3	4	5	6
12	Telengiri	Koraput	500000	--	--
13	Ret	Kalahandi	400000	--	--
14	Titilagarh Stage – II	Bolangir	10000	--	--
15	Survey & Investigation (Detail in Annexure-I)	Whole State	40000	--	--
16	Director R&R		10000	--	--
	Sub-Total		3310000		
	Total (AIBP)		10500000		
C	RIDF Projects				
	RIDF-X				
1	Rajkanika Creek	Kendrapara	10000	--	--
	Sub-Total		10000		
	RIDF-XII				
2	Aul creek Irr. Project	Kendrapara	10000	--	--
	Sub-Total		10000		
	RIDF-XIII				
3	Ghatakeswar Multi purpose Project: Integrated project for drinking water supply and irrigation	Ganjam	25000	--	--
4	Creek irrigation project for Damouzi Island Karamkul to Pitapani	Kendrapara	5000	--	--
5	Restoration to Daya West Branch Canal	Khurda	3000	--	--
	Sub-Total		33000		
	RIDF-XIV				
6	Improvement works to the command areas of Gobardhanpur Barrage	Puri	28000	--	--
7	Imp. To Kakatpur and Kundhei Disty of Mahanadi Delta St-II by constn of Barrage over river Prachi	Puri	1000	--	--
8	Improvement to Astaranga Minor	Puri	10000	--	--
9	Imp to Kakatpur Branch Canal by providing trough from RD 70.36 Km to 71.80 Km near Bauria Kana	Puri	10000	--	--
10	Rajua D/W	Khurda	40000	--	--
11	Improvement to Sukanai Haza and its distributary	Ganjam	15000	--	--
12	Improvement to Debadhumi Haza and its distributary	Ganjam	20000	--	--
	Sub-Total		124000		

Sl. No.	Project Name	Benifitted Area (District/ State)	Outlay during 2012-13 (in TRs)	Quantifiable deliverables, output if any	Remarks
1	2	3	4	5	6
	RIDF-XV				
13	Improvement to Kundhei disty from RD 00 to 7.850 Km along with service road.	Khurda	15000	--	--
14	Construction of Canal System to Marichia, Jhinkaradiha Island of Puri Main Canal.	Khurda	3000	--	--
15	Improvement to Retamunda Branch Canal System of Hirakud Distribution System	Baragarh	100000	--	--
16	Improvement to B. Nuagam Inundation system of Bahuda at B. Nuagam (Ganjam)	Ganjam	1000	--	--
17	Improvement to Poichandia Irri. Project by c.c. lining to critical reaches of Disty. System.	Ganjam	20000	--	--
	Sub-Total		139000		
	RIDF-XVI				
18	Constn of Right Main Canal of Bagh Barrage Project	Boudh	80000	--	--
19	Constn. of a D/W across river Baghua at Gobindapur	Ganjam	70000	--	--
20	Imp. to right Main Canal from Rd 17922 m to 25420m of Ghodahada Irr. Project.	Ganjam	9000	--	--
21	Imp.to Markana Minor from R.D. 00 to 9.40 K.M. by providing C.C. Lining	Balesore	12500	--	--
22	Renovation of Natia Jore creek Irr. Project in Chandabali block of Bhadrak dist.	Bhadrak	25000	--	--
	Sub-Total		196500		
	RIDF-XVII				
23	Constn of Nuagam Disty of Rushikulya Irr. System.	Ganjam	20000	--	--
24	Imp to disty. System of R.M.C from RD. 4030 to 6050 m of Ghodahada Irr. Project.	Ganjam	10000	--	--

Sl. No.	Project Name	Benifitted Area (District/ State)	Outlay during 2012-13 (in TRs)	Quantifiable deliverables, output if any	Remarks
1	2	3	4	5	6
25	Impv to Kadaguda Distributary from RD 00 Mtr. Ato 4000 Mtr. Of Kadaguda Distraibutary Off-taking at RD 11580 Mtr. Of right Distributary & excavatioin of Bahaarapur Distributary from RD 5340 mtr. To 6540 Mtr. and Baharapur Sub-minoar No.I, No.II &	Gajapati	32500	--	--
26	Imp. to Godbhaga Disty. System of Hirakud Disty.	Baragarh	50000	--	--
27	Imp. of Sambalpur Distry	Sambalpur	50000	--	--
28	Imp. to Attabira Branch Canal system (Excluding Attabira tail disty. & it's system) of Hirakud Distributary System.	Baragarh	80000	--	--
29	Imp. to Attabira Tail Disty. & it's System off taking from tail front of Attabira Branch canal.	Baragarh	50000	--	--
30	Imp. to Behrea Disty. And Baiman Disty. Canal system of Hirakud Distribution System	Baragarh	50000	--	--
31	Constn of lining of Disty-1 of Rushikulya Irr System.	Ganjam	10000	--	--
32	Construction of Lining of Benapat Minor of Rushikulya Irrigation system.	Ganjam	10000	--	--
33	Construction of lining of Belapur minor and its minors and sub\ -minors of Baghua Irr.Project.	Ganjam	10000	--	--
34	Survey & Investigation (Detail in Annexure-I)	Whole State	15000	--	--
	Sub-Total		387500		
	Total (RIDF)		900000		
D	Other State Plan Project				
1	WALMI		20000	--	--
2	Research		7500	--	--
3	MIS		18100	--	--
4	Upkeep		61335	--	--
5	Constn. of Maritime Museum,Jobra	Cuttack	35000	--	--
6	Water Supply to Samuka Beach	Puri	20000	--	--

Sl. No.	Project Name	Benifitted Area (District/ State)	Outlay during 2012-13 (in TRs)	Quantifiable deliverables, output if any	Remarks
1	2	3	4	5	6
7	Information, Edu & Communication activities (IEC)		5000	--	--
8	Periphery Development of Reservoirs	Whole State	100000	--	--
9	Pre-Project Activities	Whole State	200000	--	--
10	ERM work of Major & Medium Projects	Whole State	150000	--	--
11	Mahendratanya Anicut Project	Gajapati	66000	--	--
12	Lower Vamsadhara St-I	Rayagada	2500	--	--
13	Other charges		5000	--	--
14	Vamsadhara Tribunal		4000	--	--
15	Constn of control structure for instream storage scheme (Check Dam)	Whole State	250000	--	--
16	Legal consultancy & Consultancy charges & studies		10000	--	--
17	Modernisation of quality control laboratory		30000	--	--
18	Deo	Mayurbhanj	100000	--	--
19	Hadua	Cuttack	15000	--	--
20	Ong Extn.	Sonepur	5000	--	--
21	Baghalati Phase-II (Spell-II)	Ganjam	50000	--	--
22	Brutanga Irrigation project	Nayagarh	10000	--	--
23	Ong Dam	Bargarh	80000	--	--
24	Major Check dams and barrages on major streams	Whole State	10000	--	--
25	Consulting charges of SQMC	Whole State	6900	--	--
	Total State Plan Projects		1261335		
	G.Total (Major & Medium)		14896335		
II	Flood Control & Drainage				
A	RIDF Projects				
	RIDF-XII				
1	H.L bridge over Tantighai	Jajpur	15000	--	--
2	Pejagala Drainage System	Balesore	1000	--	--
3	Imp. to Rebo Drainage Channel	Bhadrak	2000	--	--
4	Imp. to Porapokhari Drainage	Bhadrak	2000	--	--
	Sub-Total		20000		

Sl. No.	Project Name	Benifitted Area (District/ State)	Outlay during 2012-13 (in TRs)	Quantifiable deliverables, output if any	Remarks
1	2	3	4	5	6
	RIDF-XIII				
5	Construction of Sluices on Saline Gherries in Rajnagar	Kendrapara	1000	--	--
6	R/S to Damarpur Gherry from RD 0.00 km to 8.70 km and protection of the scoured bank of river Brahmani right at Palapatna and Kadamdandi	Kendrapara	5000	--	--
7	R/S of Mahanadi right embankment from Manibhadra to Paturia	Khurda	15400	--	--
8	Bridge across river Bhargavi near village Gokulpur at RD 58.80 km	Puri	5000	--	--
9	Bridge across river Bhargavi near village Malisahi at RD 50.10 km.	Puri	5000	--	--
10	Protection to Jharling Belanga Saline embankment from RD 2.87 to 5.20 Km	Puri	2000	--	--
11	Imp. to road Budha kharasuan left from Budha Ghat to Singhpur over CE No.5A RD.8.58 to 26.4,OAE no.6B RD 0 to 7.2 km and OAE no.7B from 0 to 10.72 km	Jajpur	2000	--	--
12	Renovation of Sapanpat from Mahakalpara to Sherpur from 0.00 to 9.00 Km	Jajpur	500	--	--
	Sub-Total		35900		
	RIDF-XIV				
13	Constn of High Level Bridge over Pandara Nalla near village Atta	Jajpur	15000	--	--
14	Bridge across river Luna near village Janghar at 7.30 Km	Puri	3000	--	--
15	Protection to Aska town by improvement of left & Right Flood embankment to River Rushikulya	Ganjam	5000	--	--
16	Modernisation of left Flood bank of river Rushikulya, Machhai Pandia, Purusottampur, Achuli Balia, Jaleswar Kahindi & UDS pur	Ganjam	1000	--	--
17	Imp. To embankments on Mandaghai, Alisapatna, Rehapada, Mohanpur on Kelua Left, Brahmani Left and Kharasuan Right.	Ganjam	5000	--	--

Sl. No.	Project Name	Benifitted Area (District/ State)	Outlay during 2012-13 (in TRs)	Quantifiable deliverables, output if any	Remarks
1	2	3	4	5	6
18	Improvement to Solapat Bahabalpur Saline embankt	Balesore	15000	--	--
19	Improvement and strengthening Right Flood embankment of River Baghua (RD 12.20 km to 24.25 km,)	Ganjam	5000	--	--
20	Improvement to CE No. 78 (A) from Gandhipalli to Bankal	Cuttack	5000	--	--
21	Strengthening embankment of Rushikulya river from Chanduli to Pursotampur	Ganjam	15000	--	--
22	Construction of High Level spurs at RD 77.57 Km, 77.80 Km and renovation of spurs at RD 78.99 Km and 79.04 km of Devi right at Baurikana	Puri	10000	--	--
23	Improvement CE No.26(A) on Kelua right from Kaima bridge to Rampur from RD 0 to 9.00 km.	Jajpur	600	--	--
24	Improvement to Nambu Nalla System	Balesore	1000	--	--
25	Bhobilopat & Solapat Drainage System to river Kimiria	Jajpur	1000	--	--
26	Imp. to oldGobari Drainage Project	Kendrapara	1000	--	--
27	Modernisation of Kharinalla and its branches	Ganjam	500	--	--
28	Modernisation of control sluice in Birua mahara near village Jahangir	Bhadrak	2000	--	--
29	Kanteijodi Nalla of Bahuda Basin	Ganjam	2000	--	--
30	Improvement to Naibranalla and its branches	Ganjam	400	--	--
31	Modernisation of Kani Drainage	Jajpur	20000	--	--
	Sub-Total		107500		
	RIDF-XV				
32	Construction of RFB including protecton work on river Vamsadhara near Gumuda bridge	Rayagada	2000	--	--
33	Construction of flood bank of river Kanteijodi to protect Village Jakara and Tentiapada and Jakara	Ganjam	2000	--	--

Sl. No.	Project Name	Benifitted Area (District/ State)	Outlay during 2012-13 (in TRs)	Quantifiable deliverables, output if any	Remarks
1	2	3	4	5	6
34	Constuction of flood bank of river Padmatoal to protect village Gudipadar Balarampur Sabareipeta including construction of pile foundation CR-cum-VR to connect village Gudiapadar, Pamagaon, Sabarelpeta an stabilisation of ayacut of Godiapadar.	Ganjam	1000	--	--
35	Flood protetion work on LFB on Ghodahada near village Moulabhanja.	Ganjam	2000	--	--
36	Flood protection work of left bank of river Vamsadhara near Gudari NAC	Ganjam	1000	--	--
37	Flood protection work to left bank of river Vamsadhara near Gunupur town	Ganjam	2000	--	--
38	Protection to RFB of river Bahuda to protect village Nuapada (Derasahi to Sila sahi) Dhanarasi Sasana and LFB of river Bahuda to protect village Sundarada	Ganjam	5000	--	--
39	Restoration to LFB of river Ramnadii village Chasanimakhandi and Jakameripalli	Ganjam	2000	--	--
40	Restoration to left and right flood bank of river Ghodahada near village Pentho and U/S and D/S village Kaithakhanid	Ganjam	5000	--	--
41	Flood protection work to RFB on river Ghodahada near village Gulunda, Guma, Tileswar, Baladi, Sundiapalli, Ambagaon, Samantapur and Jalanara.	Ganjam	10000	--	--
42	Protection work on left side of river Ramanadi from village Jakameripalli to Jalamareipalli	Ganjam	10000	--	--
43	Flood protection work on RFB of river Rushikulya near Janivilli and Nandinighar Tota.	Ganjam	5000	--	--
44	Flood protection work on LFB of Rushikulya near Keshara, Singhpur and Huhulapalli.	Ganjam	20000	--	--
45	Protection to scoured bank on Brahmani left village Budhibil.	Angul	2000	--	--

Sl. No.	Project Name	Benifitted Area (District/ State)	Outlay during 2012-13 (in TRs)	Quantifiable deliverables, output if any	Remarks
1	2	3	4	5	6
46	Construction of spur at RD 3.55 Km on Devi left embankment at Alipada.	Jagatsingpur	20000	--	--
47	Improvement to Genguti left embankment Benapur to Areikana from RD 00 to 8600 mtr.	Jajpur	15000	--	--
48	Improvement to road over OAE 18(B) on Brahmani left and CE No.17(A) on Patia right from Barabati to Sribantapur.	Jajpur	25000	--	--
49	Constn of High Level Bridge over Ganda Nalla	Jajpur	20000	--	--
50	Improvement to service road of RMC of Kalingadola Diversion weir from RD 00 Km. to 9.50 Km.	Ganjam	10000	--	--
51	Impv to service road of Poichandia Diversion weir from RD 00 Km. to 19.575 Km.	Ganjam	20000	--	--
52	Improvement to Sitamba Nalla	Ganjam	2500	--	--
53	Sluice cum VRB at RD 30m of Samsarpur sabua link drain and its renovation under HLC Range-I	Jajpur	10000	--	--
54	Imp. to Sagadia drainage outfalling to river Badagenguti	Jajpur	23600	--	--
	Sub-Total		215100		
	RIDF-XVI				
55	Improvement to Dam top and its approach road of Ghodahada Irr. Project.	Ganjam	1000	--	--
56	Restoration to left bank of River Vansadhara near village Palsingi	Ganjam	5000	--	--
57	Const. of HL Bridge over river Chandua at Areda	Jajpur	1000	--	--
58	Imp. to Daya Left Embankment from Gadasahi to Nuagaon (RD 51.50 to 60.0km.)	Puri	10000	--	--
59	Imp. to Luna right Embankment from Karamala to Nuagaon (RD 12.00 km. to 26.00km)	Puri	15000	--	--
60	Improvement to Embankment on Mandaghai O.A.E 24 (B), Alishpatana - Rahapada TRE on Kelua Left and OAE No.18 (B) on Brahmani left.	Jajpur	30000	--	--

Sl. No.	Project Name	Benifitted Area (District/ State)	Outlay during 2012-13 (in TRs)	Quantifiable deliverables, output if any	Remarks
1	2	3	4	5	6
61	Imp. To Embkt. On C.E. No.26(A) from Bhuban to Kaima bridge and Brudhaling-Majhipada OAE from Ramapur to Kadampal.	Jajpur	30000	--	--
62	Construction of Right flood Bank along the River Mahanadi to Protect Boudh Town	Boudh	20000	--	--
63	Restoration to Nilaguda Nalla to protect village Kinigam	Gajapati	4000	--	--
64	Restoration to left bank of river Vansadhara from Kasinagar NAC to New Kasinagar	Gajapati	5000	--	--
65	Resto. to bank of river Vansadhara near village Sara.	Gajapati	2000	--	--
66	Resoration to left bank of river Vansadhara near village Badigam	Gajapati	5000	--	--
67	Protection work on both sides of River Ghodahada near village Talasing	Ganjam	5000	--	--
68	Protection to Right flood bank of River Bahuda to protect village Maisanpur, Barabaranga, Bhimpur, B. Nuagaon, Sardhapur, and left flood bank of river Bahuda to protect village Goudagaon, Patrachudi, Tikarapada, Samsinghi and left and right bank of river	Ganjam	10000	--	--
69	Flood Protection to both banks of River Nagavali near village Pentha, Sanacandili, Amalabata & Batapada of J.K.Pur.	Rayagada	5000	--	--
70	Raising & strenghening of flood protection embankment of river Dahuka from Ankulipatna to Chmpeitpur	Nayagarh	5000	--	--
71	Protection to Kuakhai left embankment from R.D 6.50km to 8.50km near Petaghai.	Puri	3000	--	--
72	Protection to Kuakhai left embkt from R.D 3.385to 4.075km including construction of spurs at RD 3.690km, 3.730km, 3.770km, 3.810km and 3.850km near village Bhainchua.	Puri	5000	--	--

Sl. No.	Project Name	Benifitted Area (District/ State)	Outlay during 2012-13 (in TRs)	Quantifiable deliverables, output if any	Remarks
1	2	3	4	5	6
73	Approach Road to Palur Fish Landing Centre.	Ganjam	3000	--	--
74	Contn of Flood Protection embkt wall on river Suktel from Dhamansar - Ramsingha-semelia – 5 km.	Bolangir	5000	--	--
75	Constn. of Flood Embkt Protection wall at Bhutiarbahal to Kuturla	Bolangir	3000	--	--
76	Restoration to Jhikardiha- Marchia Gherry (Const. of Drainage Sluice over baranga Escape channel)	Khurda	5000	--	--
77	Restoration to Baragaon saline Gherry from RD 3.80 to 10.00km	Kenderapara	10000	--	--
78	Protection to scoured Bank on Kuakhai Left embkt near village Nuapatana and Hansapal NH-5 Bridge .	Khurda	5000	--	--
79	R/S of flood protection embankment of river Duanta and kusumi from Tipura to Baunsiaparha	Nayagarh	20000	--	--
80	Flood protection to BBSR city by strengthening and improv of Daya Right Embk from RD.00 to 10.00km.	Khurda	40000	--	--
81	Imp. to Alaka drainage system.	Jagatsingpur	20000	--	--
82	Imp. to Prachi drainage system.	Cuttack	40000	--	--
83	Imp. to Gobari Drainage system.	Jagatsingpur	20000	--	--
84	Imp. to Hansua Drainage system from RD 40.76 to 57.54 km.	Cuttack	40000	--	--
85	Imp. to Adasapur Nalla Drainage system	Cuttack	35000	--	--
86	Imp. to Devi-Tanla Drainage system from RD 00 to 25.00 km.	Cuttack	30000	--	--
87	Imp. to Sukapaika right from RD 00 to 27.50km.	Cuttack	20000	--	--
88	Imp. to Chhatisapat Drainage system	Cuttack	50000	--	--
89	Imp. of Nuamahara Drainage from RD 00 to 10.56km. Of Jajpur Dist. In Brahamani Baitarani Doab No. XIV.	Jajpur	40000	--	--
90	Imp. to Kusumi Nalla and its branches in Odagaon Block of Nayagarh District under Doab. XVI.	Nayagarh	10000	--	--
91	Impv. to Rananadi Drainage Cut of Banki Block of Cuttack district.	Cuttack	20000	--	--
	Sub-Total		577000		

Sl. No.	Project Name	Benifitted Area (District/ State)	Outlay during 2012-13 (in TRs)	Quantifiable deliverables, output if any	Remarks
1	2	3	4	5	6
	RIDF-XVII				
92	Protection to Scoured Bank on Chitrotpla left from Raghampur to Bateswar.	Cuttack	7000	--	--
93	Protection to scoured bank on Mahanadi left from NH-5 Jagatpur to Gopinathpur near Industrial state. (RD. 670.00 to 1420.00mt.)	Cuttack	5000	--	--
94	Protection to Scoured Bank of C.E. No.-41(A) on Mahanadi left from Satabatia to Dihasahi.	Cuttack	8000	--	--
95	Const. of F.P.E. at Dhanghara between river Tel left from RD 00 M(PWD road at Tusura Bridge) to Rd 2925m river Sonegarh right.	Bolangir	10000	--	--
96	Protection to Kani Kharsuan Right Embankment at Araji from R.D. 4.30 to 4.50k.m. with one sour and R.D. 12.205 to 12.350k.m. at Bhuinpur with renovation of 4nos. Of spur at Balisahi.	Kendrapara	5000	--	--
97	R/S.to Luna left embankment from RD 16km to 27km, Luna Ratnachira flood embkt. from RD 00km to 6.2km, Luna left embkt. from RD 00km to 4.00km near Sukal.	Puri	20000	--	--
98	Improvement and flood Protection to OAE No. 94 (B) on Kathajori right from RD 00 Km. to 15.00 Km.	Cuttack	5000	--	--
99	Improvement and Flood Protection to OAE No. 95(B) on Surua left from RD 00 Km. to 16.00 Km.	Cuttack	5000	--	--
100	Renovation of spurs at Daleighai of Kthajodi left embkt RD 7.8to 14.60 .	Jagatsingpur	5000	--	--
101	Protection to scoured bank on Devi left embankment at Garej from RD66.310km to RD67.050km	Jagatsingpur	5000	--	--
102	Protection to Talada Island and Tarasahi gherry on Devi left embankment	Jagatsingpur	5000	--	--
103	Raising & strengthening of river embankments of Devi left and Biluakhai right in Baisi Mouza Island.	Jagatsingpur	5000	--	--

Sl. No.	Project Name	Benifitted Area (District/ State)	Outlay during 2012-13 (in TRs)	Quantifiable deliverables, output if any	Remarks
1	2	3	4	5	6
104	Imp. to CE No. 13A on Ganda left from Jokadia to Jajpur Road (RD 00 to 5000m)	Jajpur	5000	--	--
105	Imp. to communication facility over CE No.5A from RD 6.550 K.M to Rd 23.05 K.M on Budha Kharasuan left from Budhaghat to singhpur .	Jajpur	5000	--	--
106	Raising & strengthing to Right Embankment of Baitarani river from Balarampur to Gahiripal with communication facility	Jajpur	10000	--	--
107	Impvnt to Daya left embankment from RD 00 to 6.00 Km.	Puri	5000	--	--
108	Constn of low level spur, launching apron, raising and strengthening of CE No.44(A) on Nuna left embankment from Danpur to Maharkul (RD 42.10 to 49.760 Km).	Kendrapara	5000	--	--
109	Protection to scoured bank of river Kharasun near village Jayakunda from RD 00 to 600 M	Kendrapara	5000	--	--
110	Protection to scoured bank of river kharsuan near village Pandrukoili from RD 00 to 560mtr.	Kendrapara	5000	--	--
111	Protection to scoured bank of river Kharasuan near village Siko from RD 00 to 800Mtr.	Kendrapara	5000	--	--
112	Protection to scoured bank of Gopalpur Akhandashai OAE on Nuna left near village Dadhipur.	Kendrapara	5000	--	--
113	Raising & Strengthening of old Marahata Bandha on Kharasuan left and construction of Launching Apron near village Kandia.	Kendrapara	5000	--	--
114	Improvement to Right flood bank of river Badanadi from Jadahatuni to Gujurali.	Ganjam	10000	--	--
115	Imp.to canal embknt from Salia Dam to NH-5 of Salia Irrigation Project.	Khurda	15000	--	--
116	Improvement to service road of LMC of Bahuda Irrigation project from RD 6370m to 11990m.	Ganjam	14000	--	--
117	Imp. to Telejori & Devi-Kandal Drainage system	Cuttack	30000	--	--

Sl. No.	Project Name	Benifitted Area (District/ State)	Outlay during 2012-13 (in TRs)	Quantifiable deliverables, output if any	Remarks
1	2	3	4	5	6
118	Imp. to Brundhanadi Drainage system from RD 00 to 26.64 k.m	Jagatsingpur	25000	--	--
119	Sectioning of river Makara from RD 2.700km to 6.8 km	Puri	40000	--	--
120	Imp. to Luna River from RD 7000m to RD 25300m.	Puri	46000	--	--
121	Renovation to Kurunti Drainage channel with structures (DC-7) under Doab-VII.	Puri	20000	--	--
122	Renovation to Tarkanja-Kanja Drainage channel(DC-3) from RD 00 to 6.90km(Doab-VII)	Puri	10000	--	--
123	Renovation of Jamuna Nallah including its link drains in Jajpur district in Doab No. XIV	Jajpur	1000	--	--
124	Impv to drainage system of Kanteikoli Nalla from Rd 00 to 9.20km and its branches under Rusikulya Basin of Ganjam Dist. (Doab-XVII)	Ganjam	500	--	--
125	Renovation of Bahada Nalla and its branches under Rusikulya Basin in doab No. XVII in Rageilunda Block	Ganjam	1000	--	--
126	Renovation of Surya Nalla and its branches under Rusikulya Basin in doab no. XVII in Kukudakhandi & Rangeilunda Block.	Ganjam	1000	--	--
127	Renovation of Kiajhara & Bodaghai Nalla with its branches under Rusikulya Basin in Sheragada & hinjili Block	Ganjam	1000	--	--
	Sub-Total		354500		
	Total (RIDF)		1310000		
B	Flood Management Programme (FMP)				
	Flood Control sector				
Or-73	Flood Protection work for Brahmani-Kelua-Birupa Doab of Brahmani system in Jajpur district	Jajpur	200000	--	--
OR-74	Flood Protection work in critical reaches of Rushikulya river	Ganjam	90000	--	--
	Drainage Sector				
Or-33	Renovation extension and Improvement of Paga Nalla System of Balasore Sadar Block.	Balesore	2000	--	--

Sl. No.	Project Name	Benifitted Area (District/ State)	Outlay during 2012-13 (in TRs)	Quantifiable deliverables, output if any	Remarks
1	2	3	4	5	6
Or-38	Improvement to Parvati Nallah in Basta and Baliapal Block	Balesore	2000	--	--
Or-39	Renovation, Extension & Improvement of Haripur Nallah System of Remuna Block	Balesore	2000	--	--
Or-41	Renovation, Extension & Improvement of Kaonra Drainage System of Balasore Sadar Block	Balesore	5000	--	--
Or-43	Improvement of Water-logging area near village Aruahadham in Baliapal Block	Balesore	10000	--	--
Or-51	Improvement to Ratnacira drainage RD 3.5 Km to 8.5 Km	Puri	7800	--	--
Or-54	Renovation of Rebo drainage channel from Nukuri/Hansapur to Gadiali (from RD 71.00 to 64.00 Km)	Bhadrak	100	--	--
Or-56	Renovation of Kapali drainage channel from village Nukuria/Hansapur Khaparapada (from RD 64.40 to 58.60 Km)	Bhadrak	100	--	--
Or-57	Renovation of Kansabansa drainage channel from RD 59.64 Km to 54.50 Km village Biripada to kanheibanka.	Bhadrak	1000	--	--
Or-71	Renovation of Old Brahmani Drainage Creek including drain of Pattamundai Block	Kendrapara	10000	--	--
	TOTAL(FMP)		330000		
C	State Plan				
a.	Normal flood control works (Detail list enclosed in Annexure-II)	Whole State	920000	--	--
b.	Drainage works (includes Drainage improvement for Konark-Rs.300.00 lakh, Dredging of river mouth of Daya, Makara, Luna etc) Detail list in Annexure-III	Whole State	280000	--	--
	Sub-Total (C)		1200000		
	Total (Flood Control & drainage)		2840000		
III	Minor Irrigation				
A	Flow Irrigation (Detail list in Annexure-IV)				
	Orissa Community Tank Management Project	Whole State	525000	--	--

Sl. No.	Project Name	Benifitted Area (District/ State)	Outlay during 2012-13 (in TRs)	Quantifiable deliverables, output if any	Remarks
1	2	3	4	5	6
	NABARD Assisted Projects	Whole State	420000	--	--
	BKVY (NABARD)	Whole State	000	--	--
	Special Central Assistance (Check Dam)	Whole State	161350	--	--
	AIBP Assisted Projects	Whole State	280000	--	--
	State fund	Whole State	90000	--	--
	RRR	Whole State	750000	--	--
	State Plan (Check Dam)	Whole State	1750000	--	--
	Megalift scheme(state fund)	Whole State	1500000	--	--
	Sub-Total		5476350		
IV	Ground Water Survey & Investigation	Whole State			
	Direction & Administration	Whole State	6000	--	--
	Hydrology ProjectPh-II (Ground Water)	Whole State	16500	--	--
	Sub-Total		22500		
V	Orissa Lift Irrigation Corporation				
	BKVY (RIDF)	Whole State	1500000	--	--
	BKVY (SCA)	Whole State	100000	--	--
	Hirakud Development (RIDF)	Whole State	20000	--	--
	Sub-Total		1620000		
VI	Command Area Development	Whole State	860000		
	GRAND TOTAL		25715185		

Note :

1. Work / Scheme / Project-wise allocation is tentative and may be varied in keeping with the progress of work during course of the Financial Year.
2. Quantifiable deliverables, output has been reflected schemewise from page-19 to 29.

Annexure-I

Major & Medium Irrigation Projects under Survey & Investigation

Sl. No.	Name of the Project	Scheme	Outlay (in TRs)
1	2	3	4
1	Champalijore Irrigation Project.	NABARD	1400
2	Karandijore Irrigation Project.	NABARD	001
3	Mankada Irrigation Project.	NABARD	798
4	Kutalisingha Irrigation Project.	NABARD	800
5	Kusumi Irrigation Project	NABARD	2000
6	Dahuka Irrigation Project	NABARD	001
7	Barrage at Palipanka	NABARD	1100
8	Brahmanipada Irrigation Project.	NABARD	800
9	Banta Irrigation Project.	NABARD	600
10	Badanadi Irrigation Project.	NABARD	800
11	Nandini Irrigation Project.	NABARD	100
12	Kusei Irrigation Project.	NABARD	100
13	Bankatira Irrigation Project.	NABARD	1500
14	Khairibhandan Irrigation Project.	NABARD	800
15	Sono Irrigation Project.	NABARD	1800
16	M/R to Residential & Non-Residential Building under Mayurbhanj Inv. Divn.	NABARD	200
17	Ahirajore Irr. Project.	NABARD	800
18	Sankhabhanga Irr. Project.	NABARD	500
19	Karapani Irr. Project.	NABARD	600
20	Barrage across Bheden river	NABARD	300
	Total		15000

Sl. No.	Name of the Project	Scheme	Outlay (in TRs)
1	2	3	4
1	Brutang Irrigation Project	AIBP	4322
2	Samakoi Irrigation Project	AIBP	4336
3	Hinjili Irrigation Project	AIBP	2783
4	Hidising Irrigation Project	AIBP	2303
5	Barmul Hydro Power Project	AIBP	002
6	Mahanadi - Brahmani River Link Hydro Power Project	AIBP	002
7	Barrage at Sikharghat	AIBP	100
8	Upper Samakoi	AIBP	500
9	Observation Gauge Discharge	AIBP	400
10	Laxmipather Irrigation Project.	AIBP	500
11	Salki Hydro Power Project	AIBP	1900
12	Bhimkunda Barrage Project	AIBP	800
13	Balijori Hydro Power Project	AIBP	2125
14	Katra Irrigation Project	AIBP	200
15	Burhabalang Irrigation Project	AIBP	500
16	Ong Dam Project	AIBP	625
17	Jeera Irrigation Project	AIBP	2375
18	Ranjore Irrigation Project	AIBP	2375
19	Malatijore Irrigation Project	AIBP	600
20	Ib Irrigation Project	AIBP	700
21	Lamdora Irrigation Project	AIBP	452
22	Suidihi Irrigation Project	AIBP	500
23	Chandrinalla Irrigation Project	AIBP	600
24	Samiji Irrigation Project	AIBP	400
25	Kala Irrigation Project	AIBP	600
	Total - Non-KBK	AIBP	30000

Sl. No.	Name of the Project	Scheme	Outlay (in TRs)
1	2	3	4
1	Lower Vansadhara Hydro Power Project	AIBP	4476
2	Khadago Hydro Power Project	AIBP	3490
3	Turi Guntant Irrigation Project.	AIBP	1184
4	Lower Nagavali Irrigation Project.	AIBP	3500
5	Upper Vansadhara Irrigation Project.	AIBP	2500
6	Lower Vaskel Irrigation Project	AIBP	750
7	Govindapalli Irrigation Project	AIBP	1000
8	Middle Kolab Hydro Power Project/ Lower Kolab	AIBP	4500
9	Indravati Barrage Project	AIBP	4500
10	Tel Integrated Hydro Power Project	AIBP	3700
11	Uttei - Roul Integrated Hydro Power Project.	AIBP	2698
12	Upper Udanti Irrigation Project	AIBP	2500
13	Sandul Irrigation Project	AIBP	2700
14	Sagada Irrigation Project	AIBP	500
15	Lower Lanth Irrigation Project	AIBP	1000
16	Tel Barrage Irrigation Project	AIBP	1000
17	Surubalijore Irrigation Project	AIBP	002
	Total - KBK		40000
	Grand Total - Non KBK + KBK		70000

Annexure-II

Flood Control (River Embankment) Works under State Fund

Sl. No.	Name of the Work	Outlay (in TRs)
1	2	3
	Angul Irrigation Division	
1	Improvement to Scoured Embankment on River Tikira near village Jharabareni	800
2	Improvement to Scoured Embankment on Mahanadi Left near village Malipadar	1000
3	Improvement to Scoured Embankment on Mahanadi Left near village Kanheibareni	1000
4	Improvement to TRE on Brahmani Right near village Sankulei	2000
5	Protection to Scoured Bank on Ramial Left near village Baisingha	1300
6	Improvement to Scoured Embankment on Ramial Right near Rameswar Temple of Kankadahad village.	1200
7	Improvement to Scoured Embankment on Ramial Left near village Matkargola	1500
8	Improvement to MEF on Brahmani Left from Kamagora to Jhagadapada	1000
9	Improvement to MFE on Brahmani Left from Rankia to Dighi	1200
10	Improvement to Scoured Embankment on Ramial Right near village Pipala	800
11	Improvement to Marginal Flood Embankment on Ramial Right from Kadua to Saruali	800
12	Improvement to Scoured Embankment on Brahmani Right near village Gengutia	1000
13	Improvement to Scoured Embankment on Brahmani Right near village Goradapal	1000
14	Improvement to Scoured Embankment on Brahmani Right near Daudeswar Siba Temple	800
15	Improvement to Marginal Flood Embankment on Ramial Left from Khantakhhol to Krushnapur	1000
16	Construction of Spur on Ramial Left near village Indupur	800
17	Construction to Scoured Embankment on Ramial Left near village Balisahi	800
18	Improvement to Scoured Embankment at Confluence Point at of River Brahmani & Ramial near village Odhana	2000
	Total	20000

Sl. No.	Name of the Work	Outlay (in TRs)
	Aul Embankment Division	
1	Construction of sluice on Rangani Circuit Saline Embankment at Sikarapai No.3 at RD 24.50km.& raising and strengthening of embankment	3800
2	Bank protection to KK Right Embankment from RD 21.00 km to 21.50 km (deep scour near Raj Palace)	3500
3	Raising and strengthening of bank and Construction of sluice on Rajagarh Saline Gherry at Baghataila at RD 0.550 km.	3200
4	Construction of Keyarbank Sluice on Gobari Creek & improvement to embankment of Mahakalapada Chhapali Saline Gherry	3200
5	Raising and strengthening to Bidrupa TRE from RD 0.00 to 1.50 Km.	3000
6	Restoration to Gopalpur Akhadasahi OA Embkt from RD 1.60 to 3.40 km.	3000
7	Construction of Sluice on Kharanasi Saline Gherry between RD 2.50 to 4.00 km	3000
8	Construction of Sluice on Radhia Kansara Saline Gherry at RD 15.60 Km near Kakatpur	3000
9	Construction of sluice on Baragaon Saline Embkt at Kusunpur at RD 8.10 km	2800
10	Construction of sluice on Rajanagar Gadadharpur Saline Embankment at Chhadadia at RD 6.90 km	2800
11	Improvement to bank scour on Baitarani Right from RD 15 m to 200m near Baradia	2500
12	Improvement to Charpada Hatasahi TRE	2500
13	Restoration to 9B on Kharasuan Right from RD 7.00 to 8.00 km	2000
14	Improvement to Garadapur Iswarpur Embankment from RD 0.50 to 2.00km	2000
15	Improvement to Bagi Embankment from RD 6.00 Km to 7.60 Km. near Chhadesha.	2000
16	Improvement to Brahmani Left Embankment from RD 17.00 to 22.00km	2000
17	Improvement to Garadapur Iswarpur Embkt from RD 5.00 Km to 7.00 Km	1700
18	Improvement to Bagi Embkt from RD 7.90 Km to 9.5Km. Near village Kothasahi.	1500
19	Improvement to Brahmani Left Embankment from RD 12.50km to 13.310 km and 18.200 to 19.200km.	1500
20	Bank Protection to Brahmani left Embankment from RD 20.00 to 22.00 Km	1000
	Total	50000

Sl. No.	Name of the Work	Outlay (in TRs)
	Baitarani Division	
1	Improvement to Flood Protection Embankment on Baitarani Left from Gobindapur to Habaleswar near village Habaleswar	2000
2	Improvement to Flood Protection Embankment on Baitarani Left from Gobindapur to Habaleswar with slope protection to Siba Temple near village Habaleswar	2000
3	Improvement to Flood Protection Embankment on Kusei Right from Harikans to Majhipal	1500
5	Improvement to Flood Protection Embankment on Baitarani Right from Khaparakhari to Panchupalli (Stone Packing, Lunching aprons on the river edge near village Tukuna)	2000
6	Improvement to Flood Protection Embankment on Baitarani Right from Khaparakhari to Panchupalli (Raising of Embankment from Sudusudia to Baghuasahi)	2000
7	Repair & Improvement to 7 Nos of Spurs near village Mugupur	3000
8	Improvement to Flood Protection Embankment on Baitarani Right from Khaparakhari to Panchupalli (Raising of Embankment from Baghuasahi to Tukuna Sluice)	1800
9	Improvement to Flood Protection Embankment on Baitarani Right from Khaparakhari to Panchupalli (Construction / Repair of 2 Nos of Sluices near village Tukuna)	1000
10	Impv to Flood Protection Embankment on Remal Right near village Balipal	2000
11	Raising, Strengthening of Left Side river Embankment of Ghagra Nallah from Bridge to near Village Baladuan	1200
12	Raising, Strengthening of Baitarani Left River Embankment near village Sibnarayanpur	2000
13	Construction of Flood Protection Embankment from Batto to Ranapur	4500
	Total	25000
	Balasore Irrigation Division	
1	Bank protection work on right bank of river Budhabalanga including construction of one no high level spur near village Puruna Balasore.	10000
2	Bank Protection work from Talasari to Udaypur	30000
	Total	40000
	Berhampur Irrigation Division	
1	Strengthening of RFB of River Ghodahado near village Hinjili	2800
2	Construction of Spur & Launching apron near village Baranga and Potlampur	1000
3	Strengthening of LFB of Jayanmangal nalla from RD 22.00 to 23.00 Km.	500

Sl. No.	Name of the Work	Outlay (in TRs)
4	Consturction of LFB & RFB of river Kharkhari from RD 2.80km to 3.50km near vill. Angaranga	2000
5	Improvement to LFB & RFB of river Kharakhari near vill. Sama, Singipur, Billipada from RD 2 Km to 4.00Km	1500
6	Breach closing to LFB of river Dhanei near Badachadhiapada.	1500
7	Improvement to LFB of river Dhanei near Madhupali.	1000
8	Improvement to LFB of river Dhanei near village Balighai at Rameswar Temple.	1000
9	Improvement to RFB of river Dhanei near vill.Kalamba	1000
10	Improvement to LFB of river Dhanei near vill.Hirapalli	500
11	Improvement to RFB of River Dhanei near vill.Randi.	1500
12	Providing launching aprron on RFB of river Rushikulya near village Badamadhapur & Potlampur	700
	TOTAL	15000
	Bhanjanagar Irrigation Division	
1	Protection to LFB of river Badanadi from village Mukundapur to Baragam.	3950
2	Protection to Right Flood Bank of river Badanadi near Sahanapalli.	1150
3	Improvement to RFB of Kokalaba river near Patangi.	700
4	Protection of left Flood Bank of river Loharakhandi from Patulisahi to Ratanga	1800
5	FDR to Both Banks of Dayapalli nalla near Brahmanapadar	1990
6	FDR to LFB of Sananadi near Manisahi	1030
7	FDR to RFB of river Badanadi near Turumu Nuasahi.	960
8	FDR to LFB of river Badanadi from RD 5700 to 6200M.	2300
9	Protection to Left Flood Bank of river Kokalaba near Masabadi	1500
10	Protection to RFB of river Kokalaba near Kadalundi.	1600
11	Protection to LFB of Badanadi near Kurulei.	1500
12	FDR to RFB of Badanadi near village Gujurali.	1000
13	FDR to LFB of Badanadi near village Dholapita U/S of Bridge.	1620
14	FDR to LFB of river Badanadi near Dhumuchhai.	2460
15	Improvement to RFB of Kokalaba River near Suramani	750
16	Protection to LFB of Badanadi near Sorad.	1350

Sl. No.	Name of the Work	Outlay (in TRs)
17	FDR to RFB of river Rushikulya near village Gada Damadorapalli.	1500
18	FDR to RFB of river Rushikulya near village Khariguma.	3140
19	Improvement to RFB of Kokalaba River near Gadiapada.	650
20	Protection to Right Flood Bank of river Badanadi near Nuagam.	1400
21	Protection to Left Flood Bank of river Badanadi near Raipalli.	2000
22	Improvement to RFB of Kokalaba River near Kokalaba.	700
23	Protection to LFB of Badanadi near Dhanijapalli.	1500
24	Protection to LFB of Loharakhandi near Rajakunda Pump House.	1350
25	Improvement to RFB of Kokalaba River near Dangabhuin.	700
26	FDR to RFB of river Rushikulya near village Brahmandevi.	2700
27	Protection to LFB of Loharakhandi near Nahatotasahi.	2050
28	Protection to RFB of Baghua near Jagatapatana.	1000
29	FDR to RFB of river Rushikulya near village Laxmipur.	1320
30	FDR to RFB of Nandini near Karadakana.	1580
31	FDR to LFB of Sananadi near Gallery Masanisahi.	2200
32	FDR to RFB of baghua near Hatiota.	1600
33	FDR to LFB of Rushikulya near Kendupadar.	1950
34	Protection to LFB of Badanadi near Gajapadar.	1000
35	Protection to Right flood Bank of river Baghua near Humuki.	3000
	Total	57000
	Bolangir Irrigation Division	
1	Construction of F.P. Embankment on Tel left from Kukudajore to baidyanath RD 00 M to 5000 M and Baidyanath to Lakarma from RD 00 M to 3000 M along with restoration of pitching work behind the Baidyanath Temple (Ph-II)	4500
2	Construction of F.P. Embankment on river Mahanadi Left Passing through villages such as Sindhol, Hikudi, Bijepur, Dharamasala, Kumursingha, Fulchara, Kanseipali, Deulpadar, Nuagarh, Kudekeda and near Godhaneswar temple of Biramaharajpur Block in Subarnapur District.	4500
3	Construction of F.P. Embankment on Suktel right from Chandanbhati to Mirdhapalli from RD 00 M to 2470 M (Balance Work)	2000
4	Construction of F.P. Embankment on Tel Right at Muhan at Tetelkhunti in Gudvela Block	2000

Sl. No.	Name of the Work	Outlay (in TRs)
5	Construction of F.P. Embankment on Tel left at Puruna Basti, Dhanaghara in Goodvela Block.	2000
6	Construction of F.P. Embankment on Brahmaninallah Left at Bengitibahal.	2000
7	Construction of F.P. Embankment on Tel Left from Haldipali to Gatokhela	4000
8	Construction of F.P. Embankment on Tel left from Belgam to Ampali	2000
	Total	23000
	Boudh Irrigation Division	
1	Flood protection works to left bank of Sagadia Nallah near village Bukesingha	1000
2	Flood protection works to left bank of Telisahi Nallah near village Adenigada.	1000
3	Flood protection works to right bank of river Mahanadi near village Kodasinga.	1000
4	Flood protectin work to right bank of river Mahanadi near village Kankala.	1000
5	Flood protection work to left bank of river Salki near village Khandapada.	1000
6	Flood protection work to left bank of river Salki near village Khaliapalli.	1200
7	Flood protection work to Right bank of river Pillasalki near Peonpada(back side of Prajapita Brahmakumari's Iswariya Viswabidyalaya)	1200
8	Flood protection work to left bank of river Pillasalki near village Dakapala (Talasahi)	1300
9	Flood protection work to right flood bank of river Tel near village Malikud.	1000
10	Flood protection work to right flood bank of river Tel near village Ghantapada	1000
11	Flood protection work to left bank of Gundulia nalla near village Budhibalanda.	1000
12	Bank protection work on Right bank of river Mahanadi near village Krushnamkohapur.	1300
	TOTAL	13000
	Chikiti Irrigation Division	
1	Protection to Sirjholi Nalla near vill. Achaba, Gulumunda,Panasaguda of Vansadhara Right.	2500
2	Protection of right flood bank of river Ghodahada near village Gumma.	1500
3	Protection to LFB of river Ghodahada near village Panada.	3000
4	Protection to RFB of river Bahuda to protect village Kharnipada.	1500
5	Protection to Yadulwalsa Nalla near village Katuru of Vanshadhara right.	1500

Sl. No.	Name of the Work	Outlay (in TRs)
6	Protection to Dambasara nalla & Kanchia nalla near vill.Dambasara of Vansadhara Left.	1500
7	Protectin of RFB of river Ghodahada near vill.Baladia and Tileswar.	1500
8	Protectin of RFB of river Ghodahada near vill.Panada.	3000
9	Protection to RFB of Kanteijodi river to near vill.Belijodi, Bomkei.	1500
10	Protection to Gandagudi Nalla near vill.Bentiguda of Vansadhara left.	1000
11	Protection to Regada nalla & Sitakhandi nalla near vill.Kharingi of Vansadhara left.	1000
12	Protection to Down stream of Spillway Ghodahada Irrigation Project.	3500
13	Protection to Guide Bond of B.Nuagam leading channel on Rt.River Bahuda.	2000
	TOTAL	25000
	Jagatsinghpur Irrigation Division	
1	Protection to scoured bank on Biluakhai right embankment at Sankharisahi.	2000
2	Restoration to low level spurs on Devi left at Baredia.	2000
3	Restoration to low level spurs on Biluakhai left at Biridi.	2000
4	R/S to Devi left embankment from RD 33.00 Km to 35.00 Km. & Protection to Devi left embankment from Patsara to Adhanga.	2500
5	Restoration to L.L. spurs at Kolar. (4 Nos.)	3000
6	R/S to Devi left embankment from RD 46.00 Km to 49.00 Km.	2000
7	Restoration to lurching & packing at Bachhalo & Bilipada.	2000
8	R/S to Biluakhai left embankment from RD 25.00 Km to 30.40 Km.	2000
9	Improvement to Devi left embankment from RD 36.00 Km to 39.00 KM.	2000
10	Protection to scoured bank on Devi left embankment from RD 0.00 Km to 1.800 Km.	2000
11	Restoration to low level spur on Devi left embankment at Rahamba.	2000
12	R/S of Biluakhai left embankment from RD 14.600 to 16.000 Km.	2000
13	Protection to scoured bank on Devi left from RD 4.300 Km to 4.500 Km. (Down stream of Alipada bridge)	2000
14	R/S of Biluakhai left embankment from RD 12.00 Km to 14.200 Km.	2000
15	R/S of Biluakhai left embankment from RD 17.200 to 20.400 Km.	2000
16	Protection to Scoured bank on Devi left Embankment at Sunadhar	2000
17	Protection to Scoured bank on Devi left Embankment at Badabali	2000
18	Protection to scoured bank on Devi left embankment at Sribantapur.	4500
	Total	40000

Sl. No.	Name of the Work	Outlay (in TRs)
	Jajpur Irrigation Division	
1	Flood protection to Pansa Gherry on Baitarani right for 2012-13	2000
2	Flood protection to CE No. 2A on Baitarani right from Bllavighat to Sundarimuhan for 2012-13	4000
3	Flood protection to Baraha gherry on Baitarani right for 2012-13	3000
4	Flood protection to CE No. 2A from Hirapur to Kutunia on Baitarani right for 2012-13	3000
5	Flood protection to CE No. 2A for Kutunia to Patna on Baitarani right for 2012-13	3000
6	Flood protection to CE No. 2A from Baitarani right from Katikata to Dasarathpur for 2012-13	2000
7	Flood protection to Jayntira Gherry on Baitarani right for 2012-13	2000
8	Flood protection to Duttapur TRE near Kuanrseni & Parama Andandapur Sasan on Baitarani right for 2012-13	2000
9	Flood Protection to scoured bank on Balipatna Kayan TRE on Baitarani right at Balarampur for 2012-13	2500
10	Flood Protection to scoured bank on Duttapur Balipatna on Baitarani right near Nayaksai for 2012-13	2000
11	Flood Protection to scoured bank on Balipatna Kayan TRE near Icchapur & Nuapatna on Baitarani right for 2012-13	2000
12	Flood protection to flood protection embankment on Baitarani right near Raghupur for 2012-2013	2000
13	Flood protection to 14 B on Kharasuan left from RD 3.00Km to 3.300Km near Badatrilochanpur Gopal Sahi for 2012-13	2500
14	Flood Protection to Trilochanpur TRE on Budha right near Kumar Sahi & Padhi Sahi for 2012-13	2000
15	Flood protection to Jahala Paridabad banta TRE for 2012-13	5000
16	Flood protection to Risipur Debil TRE for 2012-13	3000
17	Protection to scoured bank at Banapur TRE on Kharasuan right near Gokhasahi for 2012-2013	2000
18	Protection to scoured bank near Jagannathpur Siba Mandir on OAE (10) b on Kharasuan right for 2012-13	2500
19	Flood Protection to scoured bank on Sadakpur TRE near village Ratlang on Tantighai right for 2012-13	2500
20	Flood Protection to scoured bank on OAE (7) B on kharasuan left near Kalarapal for 2012-2013	2000
21	Flood Protection to scoured bank CE No. 5A near village Mirmahala on Kharasuan left for 2012-13	2000
22	Flood protection to Mamadula-Tala Astak TRE on Baitarani left from Matha Sahi to Hasanabad for 2012-13	2000
23	Flood Protection to Athagharia-Arjunpur TRE on Kachila right from RD 00 to 1850Km for 2012-13	2000
24	Flood protection to Badak Tinter TRE from Dandamahara sluice to Sathibankuda for 2012-2013	2000
25	Flood protection to OAE No. 8B near Dobal from RD 1.50Km to 3.00Km for 2012-13	2000

Sl. No.	Name of the Work	Outlay (in TRs)
26	Flood protection to Sodha Jahangir TRE from RD 0.300Km to 1.00Km for 2012-13	2000
27	Flood protection to OAE No. 11 abcd(B) on Baitarani left from RD 2.74km to 2.940km for 2012-13	2000
28	Flood protection to OAE No. 11 abcd(B) on Baitarani left from RD 2.74km to 2.940km near village Utteipur for 2012-13	2000
29	Flood Protection to CE No. 5(b)A on and OAE No. 6(abcd) on Baitarani left for 2012-13	2000
30	Flood Protection to Behera Mahapatra Sahi, Sringanga OAE on Kapali left and CE No. 4(A) on Kapali right for 2012-13	2000
31	Flood Protection to Tampala Sorisadihi TRE at Sorisadihi, Paimasura TRE and Kalyani Nagar TRE on Reba right for 2012-13	2000
32	Flood Protection to Karanji Gunapur TRE Jagulai Sahi Kusama TRE Reba left and Hatiapada OAE on Kapali right 2012-13	2000
	Total	75000
	Jaraka Irrigation Division	
1	Improvement to Budhalinga Majhipada OAE near Banamalipur	400
2	Protection of S/B on Kelua right near Gopalpur	1100
3	Protection to scoured bank on Brahmani right near Sahapada	500
4	Protection to scoured bank on Brahmani right near Areikana	1000
5	Slope protection to Sangadeipur Bhanra TRE near Lalgohiri Ganda	2000
6	Improvement to service road of Udayapur OAE near Swain Sahi	1200
7	Improvement to Erada TRE on Tantighai right	800
8	Protection to S/B of Dudhei right near Chhatar	700
9	Improvement to Baripal Gherry	1500
10	Restoration to S/B on Brahmani left near Anyasipur	4000
11	Improvement to Birabhanupur Kakudikuda TRE	4200
12	Improvement to Bramhani Left near Rudrapur	4300
13	Improvement to Bramhani Left near Kaipada	4500
14	Const. of drainage sluice at the out fall point of Chhinda-Kharsuan at R.D.10.41 Km. of Sribantapur-Khanditara OAE	5500
15	Bank protection to Kelua left near Tareisahi of Alishapatna Rahapada TRE	700
16	Protection to scoured bank on Brahmani right near Gokarneswar	500
17	Protection to scoured bank of OAE 16 B near Keuta Laguan	800
18	Restoration to S/B on Brahmani right near Ersandha	2200
19	Restoration to S/B on Brahmani left near Kalan	1200
20	Restoration to S/B on Kharsuan right near Khanditar	1400
21	Restoration to S/B on Brahmani left near Jabara	800
22	Improvement to Tantighai TRE from Kanpur to Daurnkula	1200
23	Improvement to OAE 13 B from Bhubanpur to Madhapur	1100
24	Slope protection to OAE 15 B from Mirpatana to Kacherigoan	800
25	Restoration to S/B of OAE 15 (B) from Jaypur to Bankasahi	1400
26	Restoration to S/B on Kharsuan left at Routrapur	1500
27	Improvement to S/B of Kharsuan right near Mohanty Sahi	500
28	Restoration to S/B on Kharsuan right near Takarpada, Gandhan & Gopalpatana	1500

Sl. No.	Name of the Work	Outlay (in TRs)
29	Restoration to right bank of H.L.C. Range-II from Jokadia to Tandara	3000
30	Restoration to scoured bank on Jamara left at Bartanda	1400
31	Restoration to scoured bank on Patia left near Baliposi & Brahmanagoan	1400
32	Restoration to S/B on S/B on Patia left near Marthapur	1100
33	Restoration of Bainsira Kadikama TRE	1900
34	Impv. to Bramhani left near Kalamatia	2000
35	Protection to S/B of Bandhapada Rajapur TRE	900
	Total	59000
	Kalahandi Irrigation Division	
1	Protection to left bank of river Udanti near village Makhapadar	800
2	Protection to left bank of river Udanti near village Hatibandha	800
3	Protection to left bank of river Sundar near village Kusmal	700
4	Restoration to left flood bank of river Udanti near village Kuhura to Kantama	400
5	Restoration to left flood bank of river Udanti near village Khoelpala to Gurujang	1400
6	Extension to LFB atr Uhhala on river Tel from RD 1150m to 1250m.	1000
7	Extension to LFB at Pondkul to Kuwari from RD 00 to 150m D/S.	1400
8	Construction of low height sand screen at Nandol on Tel right.	1500
9	Extension to sand screen at Funda from RD 235mtr. to 320 mtr.	1000
10	Slope protection to river Hati left at Krushnachandrapur	2000
11	R/S of RFB of river Tel at Amathula to Nandul from RD 1400m to 1600m.	1000
12	Extension of Sand screen at Turlakhaman from RD 270m to 400m on Tel right	2000
13	Extension of right flood bank of river Tel at Kandulguda from RD 700 to 800m	1000
	Total	15000
	Kendrapara Irrigation Division	
1	Impv to CE No.44A Nuna left embkt from RD 30.15 to RD 34.00 Km.	2000
2	Improvement to Indupur Gherry from RD 2.410Km to 3.850Km.	3500
3	Protection to scoured bank on Nuna right embankment from RD 4.850 to 4.970Km near village Jayachandrapur.	2000
4	R/S to Chitrotpala right embkt from RD 44.30 to 45.52Km near vill Naindipur	2000
5	Raising and strengthening of CE No.44A Nuna left embankment from RD 46.60Km to 48.500 Km (Naraharipur to Attabuha)	2000
6	Protection to scoured bank on Gobari left near village Chhapali.	2000
7	Raising and strengthening to Chitrotpala right embankment from RD 60.200 to 63.800 Km near village Garajanga.	2000
8	Protection to scoured bank on Gobari right near village Naranpur Harijan Sahi	2000
9	Protection to right bank of river Brahmani near village Agedia.	2000
10	Raising and strengthening to Chitrotpala right embankment from RD 48.00 to 49.00 Km near village Jagannathpur.	2000

Sl. No.	Name of the Work	Outlay (in TRs)
11	Protection to scoured bank on Birupa right near village Kalashree	3000
12	Improvement to Chitrotpala Right Embankment near Bedari	2000
13	Improvement to CE No.34(b)A Brahmani right near village Balipatna	2500
14	Protection to scoured portion of Brahmani right bank near village Kadamdandi from RD 420 M to 555 M.	2500
15	Improvement to Indupur Gherry from RD 3.850Km to 5.350Km.	3500
16	Impv to CE (b) A Brahmani right from RD 60.90Km to 62.15Km.	3000
17	Protection to scoured bank on Chitrotpala right embkt. from RD 64.00Km to 64.15Km near village Kuanrpal	2000
18	Impvt to CE No.34(b)A Brahmani right from RD 62.15 to 63.20 Km.	2000
19	R/S to Chitrotpala right embkt from RD 42.60 to 43.80 Km near vill Bhadalo	2000
20	Raising and strengthening of CE No.44A Nuna left embankment from RD 52.700 to 54.00 Km (Belarpur to Dudhia)	2000
21	Improvement to Indupur Gherry from RD 0.00Km to 2.40Km.	2000
22	Raising strengthening of Chitrotpala right embkt. from RD 40.70Km to 42.00Km near village Kalabuda.	2000
	Total	50000
	Khurda Irrigation Division	
1	Protection to Lunijhara right embkt from Bodapada to Balikudia.	2200
2	Protection to Sulia left including repair of sluice near Lathipada	1500
3	Protection to Dahuka Right including renovation of sluice near village Haripur	2000
4	Protection to Dahuka left near village Kodiakahania	2500
5	Protection to Dahuka left near village Raipur Nuasahi	1000
6	Protection to Baghamari right Embankment at Jautukapatna	2000
7	Improvement to Duanto right Embankment near Kotaranga U.P School	2000
8	Repair & Restoration to Rajua left near Similipatana.	2000
9	Repair & Restoration to Daya Right from Behenta to Matiapada.	2000
10	Repair & Restoration to Makara Right near Kaudiapur	2000
11	Repair & Restoration to Malaguni Right Embankment from Ostapari to Balabhadrapur	1800
12	Repair & Restoration to Malaguni Right Embankment from Gopalpur to Masania bridge	1500
13	Repair & Restoration to Lekhanpur gherry	2000
14	Improvement to Mahanadi Right Embankment at Akurabandha (Balaramprasad)	1500
15	Bank protection to Kuanria Left near Duaragaon	1000
16	Bank protection to Brutang Left near Silligadia	1700
17	Bank protection to Kuanria Right near Sikrida & Krushnaprasad	1000
18	Repair & restoration to Mahanadi Right Embankment near Tala Pathapur	1200
19	Protection to Kusumi Right near village Asuridhipa	1000
20	Repair & restoration to Kuanria right embkt from Gadiasahi to Kadua	1500
21	Repair & restoration to Kuanria left embkt near Sarapokhari	1000

Sl. No.	Name of the Work	Outlay (in TRs)
22	Strengthening of Mahanadi right embkt near Gop	1000
23	Strengthening of Mahanadi right embkt near Banki College	1000
24	Repair & Restoration to Hada right embkt from Arikama to Patapur Sasan	1600
25	Protection to existing diversion weir on river Duanta near village Sikharpur	2000
	Total	40000
	Mayurbhanj Irrigation Division	
1	Bank protection work to the right bank of river Budhabalanga near village Mirgidari.	2500
2	Bank protection work to the right bank of river Gangahar near village Sinduria	3100
3	Bank protection work on right bank of river Jambhira near village Luhakanta	2100
4	Bank protection work on right bank of river Jambhira near Padamtalia, Pinguli & Ekatali.	3700
5	Bank protection work on left bank of river Jambhira near village Bangan.	2600
6	Bank protection work on left bank of river Jambhira near village Mahulkundia	3000
7	Bank protection work on left bank of river Kanahala near village Kukurdima.	3000
	Total	20000
	Mahanadi Barrage Division	
1	Improvement to Mahanadi right flood embankment from Brajharipur to Chhahata from RD 3500 mtr to 4500 mtr.	5000
	Total :	5000
	Mahanadi North Division	
1	Protection & Impv to Mahanadi Left in between Sarpeswar to Mancheswar	2000
2	Protection & Impv. to Mahanadi left near Bandal, Saanpur	2000
3	Protection & Impvt to Mahanadi Left near Bhatarika Pitha.	2000
4	Protection & Impv. of OAE on Mahanadi Lt from Kumarigaonhil to Nandapur	2000
5	Protection to Jankothi & Bardia OAE on Gobari Left.	2000
6	Protection & Impvt. to Birupa Left from Mulubasanta to Sipura	2000
7	Protection to scoured bank on Chitrotpala Right Embankment at Janardanpur	2000
8	Protection & Impvt. to Chitrotpala Left near Tilakana (Kadammula).	2000
9	Protection & Impvt to Nuna Right in between Demando to Tarata	3000
10	Protection & Impvt to Nuna Left at Sadhaka Nagara Gherry	2000
11	Protection & Impvt to Mahanadi Left from Baliput to Odasingha	2000
12	Protection & Impvt. to Birupa Left from Choudwar to Juluka Hill	3000
13	Protection & Impvt. to Birupa Right near Kukudanga, Mangalasaahi, Dassahi etc.	2000
14	Prot & Impvt. to Mahanadi Lt near Chasapada, Mandapada & Jagatpur	2000

Sl. No.	Name of the Work	Outlay (in TRs)
15	Protection to Genguti Right near Dakhinakula & Khadianga.	2000
16	Protection to Genguti Left near Radhadeipur & Santipur.	2000
17	Protection to Genguti Left near Narsinghpur, Patunia & Areikana.	2000
18	Protection to scoured bank on Karandia left near Balarampur Harijan Sahi	2000
19	Protection to scoured bank on Karandia left near Dhia Balarampur	2000
20	Protection to scoured bank on Nuna-Karandia right near Jamapara	2000
21	Protection to scoured bank on Nuna Karandia Rt Embkt at Karilopatna Gherry	2000
22	Protection to scoured bank on Chitrotpala Left Embkt. near Nimagada Matha at Pikirali.	2000
23	Protection to Chitrotpala left embankment near Akhua	2000
24	Protection to Karandia Left near Salar, Jalapoka etc.	2000
	Total :	50000
	Mahanadi South Division	
1	Restoration to Scoured Bank protection to C.E. No.78(A) near Aganashi on Mahanadi right embankment	3400
2	Restoration to Scoured Bank protection near Saharadiha on Paika right embkt	3000
3	Protection to OAE No.94(B) on Kathajori right near Chanduli	2000
4	Protection to OAE No.95(B) on Surua left near Kulasarichuan (Balance work)	7500
5	Protection to C.E No.85(B) on Kathajori left near Matagajpur	1000
6	Protection to O.A.E No.94(B) on Kathajori right near Aini	1000
7	Restoration to Chanduli and Bidanasi Sluice	500
8	Flood Protection work on C.E.No.78(A) from Bankal to Tarpur	2000
9	Impv to Jhimani Bhitargarh Saline embkt. from RD 0.800 to 2.00 Km.	2000
10	Restoration to scoured bank of Paika left embankment from Bharagola to Arilo	2000
11	Restoration to scoured bank of Paika left from Bilashpur to Kalapahada Ghat	1500
12	Restoration to scoured bank of Paika right embankment from Krishnanandapur to Sankheswar	2500
13	Reston to scoured bank of Paika right embkt from Sankheswar to Kolar Bridge	2000
14	Construction of launching apron near village Derakana on Paika right.	1000
15	Repair to Hayatpur sluice on Paika right.	500
16	Reston to CE No. 78 (A) on Mahanadi right embkt from Jaipur to Tirtol luck	1100
17	Restoration to scoured bank protection to CE No. 78(A) near Chaumuhani on Mahandi right	2000
	Total :	35000

Sl. No.	Name of the Work	Outlay (in TRs)
	Nimapara Irrigation Division	
1	Improvement to Dhanua Right Embankment from RD 3.00 to 6.00 km. including slope protection at Bhadrabanka	2000
2	Improvement to K.V.Right Embankment at RD 34.500 km. near village Nakadiha	3000
3	Impv to Bhargavi left embankment from RD 14.800 to 15.200 km.	2500
4	Improvement to Kushabhadra right embankment near Barilo	2000
5	Improvement to Kushabhadra right embankment near Dhanahara	2000
6	Improvement to Devi Right Embankment at RD 80.00 km.	3500
	Total :	15000
	Nuapada Irrigation Division	
1	Bank protection to down stream of spillway of Upper Jonk Irrigation Project.	5000
	Total :	5000
	Prachi Division	
1	Restoration to Bhagipur Sluice on the right afflux bundha Mundali weir	2000
2	Restoration to Kuakhai right embkt from RD 12.00 to 14.00 Km.	2000
3	Restoration to Kuakhai Right Embankment from Kuakhai Syphon to Jaypore	2000
4	Repair to scoured bank on KSD Rt. Embkt. Near vill - Urali	3000
5	Repair and restoration to scoured bank on KSD Rt. Embkt. Between RD 20.780 to 21.260 Km.	3000
6	Restoration to Devi Rt. Embkt. Near vill-Erancha Bhoisahi	3000
7	Restoration to KSDR Embkt. Near vill-Kherasa at Fakira Mahapatrasahi	3000
8	Restoration to KSDR Embkt. From RD 41.00 to 41.500 Km at Babaja.	2500
9	Protection to K.V left embankment at Deuli, Abhayamukhi, Kaliadanda	3000
10	Raising and strengthening of Daya Right Embankment from RD 18000 to 20000 & 24200 to 26700m.	2500
11	Restoration to Kandal left embankment near Vill-Arisol, Gopalnagar, Kusunpur	4000
12	Restoration to Kandal syphon, Dhanamandal, Pradhansahi	4000
13	Restoration to Old Devi Right Embankment near Suanlo, Karanja	4000
14	Restoration to Sikhar Sluice on K.S.D.Right Embankment at RD 67.05km.	2000
	Total :	40000
	Puri Irrigation Division	
1	Improvement Bhargavi right embankment from RD 42.00 km to 56.00 km (R/s and slope protection and launching apron and service road)	3800
2	Improvement Bhargavi right embankment from RD 60.00 km to 87.00 km (R/s and slope protection and launching apron)	3000

Sl. No.	Name of the Work	Outlay (in TRs)
3	Strengthening to Bhargavi right embankment from RD 32.00 km to 87.00 km including construction of launching apron at RD 54.10 km (WRD Improvement to service road from RD 33.86 km to 35.80 km , RD 35.900 km to 36.00 km and construction of launching apron at RD 53.860km to 54.006km)	1000
4	Improvement to Bhargavi right embankment from RD 27.40 km to 27.575 km near village Rathapurussottampur (R/s and slope protection and launching apron)	4000
5	Restoration to Bhargavi right embankment from RD 33.800 km to 37.800 km including repair of service road and construction of 4 nos. Gada at Torania I.B., Bishnupur, Sarangajodi, Bamadeipur Harijansahi	1000
6	Repair restoration of 6 Nos.of sluice in Luna left from RD 13.400 km to RD 15.530 km	1700
7	Raising and strengthening and Slope protection to Daya left embankment from Basantapur to Kumundala	3800
8	Improvement to Daya left embankmentfrom RD 20.500 km to RD 20.800 km (construction of C.C. gaurd wall) near village Tigiria & Surangapur	2500
9	Improvement to Daya left embankment from RD 0.00 km to RD 0.30 km (Construction of C.C. guard wall) near village Saradeipur	2000
10	Improvement to Bhargavi right embankment from RD 10.30 km to RD 10.40 km & RD 5.173km to RD 5.223 km (construction of launching apron & slope packing)	2000
11	Raising and strengthening with slope protection to Daya left embankment within RD24.50 km to 27.50 km.	4000
12	Improvement to Daya left embankment from RD 7.295 km to 7.350 km & RD 18.00 km to 18.120 km by construction of launching apron and slope protection	1000
13	Slope protection to Bhargavi left embankment from RD 42.50km to 45.70km	1700
14	Restoration to Bhargavi left embankment from RD 56.00km to 64.00km including repair of sluice.	1500
15	Protection to scoured bank of Bhargavi left embkt from RD 75.00 to 76.70km	1500
16	R/S & bank protection of Mendhakhia emabkt from RD 0.00km to 1.10 km	1000
17	Restoration to Siaro cut right embankment from RD 7.20km to 10.00km. including renovation of sluice at RD 6.98km and 7.13km	1500
18	Restoration to shutter & its accessories of Uttarana, Kamasasan, Basudeipur, Golasahi sluice on Bhargavi left and Jhula and Dasagoba sluice on Kanchi embankment.	2000
19	Improvement to Bhargavi left embankment from RD 37.00 km to RD 56.00 km with slopeprotection and alunching apron in vulnerable reaches.	1000
	Total :	40000

Sl. No.	Name of the Work	Outlay (in TRs)
Stores & Mechanical Division, Bhubaneswar		
1	Repair of Horizontal girders of under sluice and pocket sluice gates of Mundali main weir.	1000
2	Painting of stop log gate and fitting of position indicator on Puri Main Canal gates of Mundali main weir.	1000
3	Repair, renovation and painting of Tikarpada creek irrigation project of Nimapara Irrigation Division.	1000
	Total :	3000
Salandi Canal Division		
1	Slope protection to Right scoured bank of River Salandi near village Kanpur	1500
2	Slope protection to Kansabansa right on Bauripada Radhaballavpur Flood Protective Embkt. Near village Gopalpur from RD.4050M to 4200M	700
3	Slope protection to Bedpur-Kabirpur embankment on Kansabansa right at RD.9.23Km near Mangarajpur school.	1800
4	Improvement to Pirahat Hengupati Embankment from RD.00M to Tail	1500
5	Protection to Chandabali Hengupati Embkt near vill Kuli earth slip (Plate slip)	1500
6	Impv to Kaudia T.R.E. on Baitarani left from RD.00 to 6.00Km	600
7	Slope protection to O.A.E. on Salandi left near village Garadapur Siva Temple	1400
8	Slope protection to Nalia Right near village Arnopal Medical	450
9	Slope protection on C.E.No.2A near village Kaupur Biranchinarayan Temple.	400
10	Slope protection on C.E.No.2A near Gandhipadia Ghat.	150
	Total :	10000
Sambalpur Irrigation Division		
1	Flood protection to left bank of river Tikira near village Kundheigola (NH-200) of Deogarh District.	2000
2	Flood protection to Matualinalla including river training work near village Badabahal, Kantapali & Gundeimura of Deogarh District.	2500
3	Flood protection to the left bank of Kharia Nalla near village Lasa under Kuchinda Block of Sambalpur District.	4000
4	Flood proection to the right bank of river Mahanadi near village Dalab of Bargarh District	4500
5	Flood protection to the left bank of river Tikira near village Upper Munda under Naktideul Blockof Sambalpur District.	2000
6	Strengthening the course of Hariharjore Nalla including slope protection to left bank near Govindtolla of Sambalpur Town	5000
	Total :	20000

Sl. No.	Name of the Work	Outlay (in TRs)
	Sundargarh Irrigation Division	
1	Flood Protection of Left & Right Bank of Badjore Nalla at Down Stream of Spillway of Kansbahal Irrigation Project	2000
2	Flood Protection to Badjore & Mandiria Nalla near Ghoghar Temple under Rajgangpur Block	2000
3	Flood Protection to Left Bank of river Sankh near village Ushra from Gramadebati Puja place to Muhana in Kuarmunda Block	2000
4	Flood Protection of Left Bank of Badjharan Nalla near village Jadaloi under Gurundia Block	2000
5	Flood Protection of Right Bank of Badjharan Nalla near village Dumermunda under Gurundia Block	2000
6	Flood Protection of Left & Right Bank of Fatanga Nalla near S-balanga village under S-balanga G.P., Bonai	2000
7	Flood Protection to Right Bank of River Brahmani Near village Tainsar under Lathikata Block	2000
8	Improvement to flood protection work of Left Bank of river Brahmani at Panposh	2000
9	Flood Protection of Right Bank of River Brahmani near Vedvyas Temple	2000
10	Flood Protection of River Brahmani near village Jangla	2000
	Total :	20000
	Titilagarh Irrigation Division	
1	Extension of F.E. "Under Left" at Chhatabata.	5000
2	R.S. to "Under Right at Kusud.	5000
	Total :	10000
	Grand Total - LMB	820000

Annexure-II**Flood Control (Anti Erosion) Works under State Fund**

Sl. No.	Name of the Work	Outlay (in TRs)
1	2	3
	Aul Embankment Division	
1	Construction of sluice at Atharabanki on Sunity Saline Gherry at RD 1.20 km & raising and strengthening of bank.	5000
2	Improvement to Uttikana Saline Embankment near village Aradapalli	5000
3	Renovation of Sluice at Gunthala on Manpur O.A.E. on Baitarani Right Embankment.	2000
4	Impv to Manpur O.A.E. from Batarpada-Kanupur-Gunthala TRE on Baitarani Right Embk (Saline tidal protection measures)	2000
5	Restoration to Rangini Circuit Saline Embankment from RD 00km to 4.00km.	2000
6	Restoration to Rangini Circuit Saline Embankment from RD11.00 to 15.00 km	2000
7	Restrration to Gopalpur- Akhadasahi OAE from RD 14.500 to 15.300 Km	1000
8	Restoration works of Righagarh Junusnagar Saline Gherry from RD 4.00 Km to 6.00 Km	1000
	Total	20000
	Balasore Irrigation Division	
1	Improvement to Parikhi S/E including premix and seal coating.	1000
2	R/S to Inchudi S/E	500
3	R/S Chudamani Bijayapatana S/E connecting road Kantia Nali to P.W.D. Road from RD 900 to 2200mtr.	1300
4	R/S Chudamani Bijayapatana S/E from RD 19.160 to 20.335mtr.	1200
5	R/S to Bijayapatana Dhamara S/E from RD 12.00 to 13.50Km.	1800
6	R/S to Dhamara Bansada S/E from RD 100 to 1000m.	1000
7	R/S to Dhamara Bansada S/E from RD 2.980 to 3.650m.	1000
8	R/S to Dhamara Bansada S/E from RD 3.970 to 4.300m& RD 5.100 to 5.500m.	700
9	R/S to Adhuanmohanpur S/E from RD 10.32 to10.62Km and 12.00 to 12.500km.	1500
	Total	10000
	Berhampur Irrigation Division	
1	Improvement to Saline embankment from Langeleswr to Pathara.	5000
	Total	50.00
	Jagatsinghpur Irrigation Division	
1	Protection to scoured bank on Saline Embankment at Barakulasahi from RD 85.000 to 85.200 Km	28.00
2	Protection to scoured bank on Saline Embankment at Gandakula.	72.00
	Total	100.00

Sl. No.	Name of the Work	Outlay (in TRs)
Jajpur Irrigation Division		
1	Construction of Bodak Tinter Saline Embankment on Baitarani Left from Kajala nalla to Dandamunda Nalla for 2012-13.	20.00
Total		20.00
Kendrapara Irrigation Division		
1	Protection to scoure bank on Dasamouzi gherry right wing from RD 3.300 to 3.500Km near village Badakul.	20.00
2	Strengthening to Paika left embankment of Kujang Estate for RD 7.00 to 9.00 Km near village Badaghai.	20.00
3	Protection to Dasamouzi gherry left wing near Karamkul.	10.00
Total		50.00
Khurda Irrigation Division		
1	Repair & restoration to Ogalpur saline gherry	20.00
2	Improvement to Sitarampur saline gherry near Sundarpur	15.00
3	Improvement to Block-III Saline gherry near Bhusandapur	15.00
Total		50.00
Mahanadi South Division		
1	Impv to road on Saline Embkt from Irribina to Nuaratanpur from RD.1.544 to 3.234 Km	30.00
2	Improvement to road from Fatepur to Guamunda from RD 2.95 to 4.30 Km.	20.00
Total		50.00
Nimapara Irrigation Division		
1	Improvement to Jharling-Belanga Saline Embankment from RD 3.500 to 4.00 km.	20.00
2	Improvement to Jharlilng-Belanga Saline Embkt. RD 4.784 km. to RD 4.884 km.	60.00
3	Improvement to Saline Embankment from Ukulei to Kuhudi from RD 00 to 450 mtr.	20.00
Total		100.00
Puri Irrigation Division		
1	Slope protection to and launching apron to Kalapadara gherry from RD 4.50 to 5.00km	12.00
2	Improvement to Satapada saline embankment from RD 8.00km to 10.50km including construction of guard wall.	20.00
3	Impv to road on Nuapada saline embankment from RD 00km to 5.00km and construction of sluice at RD 3.40km and 4.50km.	20.00
4	R/S to Krushnaprasad saline embkt from RD 7.00 to 9.00km including slope protection.	20.00
5	Restoration to Adhenipari saline embankment from RD 1.500km to 2.50km and construction of sluice at RD 2.00km.	18.00
6	Restoration to Kurupal saline embkt from RD 00 to 500 and constn of sluice at RD 00 km.	18.00
7	Constn of guard wall and packing to Malud saline embkt from RD 22.00 to 24.00km.	18.00

Sl. No.	Name of the Work	Outlay (in TRs)
8	Restoration to Khirisahi saline embankment from RD 00km to 250m and construction of sluice at RD 00km.	19.00
9	Restoration to Jamuna saline embankment from RD 00km to 500m	20.00
10	Restoration to Titipo saline embankment from RD 2.00 to 3.30km & 6.60 to 6.90km and 20.00km to 20.20km construction of sluice at RD 6.70km.	20.00
11	Impvt to road on Malud saline embankment from RD 4.650km to 7.00km.	15.00
12	Impv to road from RD 4.20 to 7.00km (Nuagaon to Taltola) of Bajrakot saline embkt.	15.00
13	Construction of sluice at RD 2.70 & 4.00km of Mulakpari saline ring including renovation of drain from sluice point at RD 1.50km up to Sial saline ring.	15.00
	Total	230.00
	Salandi Canal Division	
1	Improvement to Paramanandapur Charadia S/E from RD.9.00Km to RD.15.250Km.	25.00
2	Improvement to Chandabali Charadia S/E from RD.10.00Km to RD.14.750Km.	15.00
3	Improvement to Bahuharipur S/E from RD.6.500Km to RD.11.00Km.	10.00
	Total :	50.00
	Grand Total - LMB	1000.00

Annexure-III

Drainage Works under State Fund

Sl. No.	Name of the Work	Outlay (in TRs)
1	2	3
A.	Executive Engineer, Drainage Division, Balasore	
1	Constn of approach road to newly constructed sluice over Gochhida Nallah at RD 630 M	5000
2	Construction of D.G. set control room for Gochhida Sluice work site	700
3	Construction of Protection wall on Nuniajodi Nallah near Saraswati Sishumandir of Balasore	600
4	Improvement and Bank connection to Bagadhupa and Tindharia Sluice of Remuna Block.	800
5	Bank Protection & Slope Packing work near Sluice at RD 24970 M of Palpala Nallah of Baliapal Block.	600
6	Construction of Sluice cum VRB at RD 4230 M of Pejagala Nallah under Basta Block.	3000
7	Construction of Drainage Sluice over Churmara Nallah near Churmara	2000
8	Construction of Foot Bridge over Pejagala Nallah near village Kundei of Basta Block	1000
9	Construction of Foot Bridge over Palpala Nallah near village Chakarada	1000
10	Construction of Foot Bridge over Bishnupur Nallah	500
11	Construction of Foot Bridge over Bhograi Embankment Pasikhal (R/S) near Tkahurbhaunri	500
12	Construction of Concrete Drain near village Manipur of Soro Block	400
13	Constn. of Slope Protection wall and stone packing on Guasul Nallah	1000
14	Slope Protection work to Ghagra Nallah near village Sajanagarh and Kusunia of Nilgiri Block	900
15	Constn of FB over Kochiakoili Nallah near Barik house of Arada village in Bahanaga Block	1000
16	Annual Maintenance, Electrification and Paintaining of Gates of Gochhida Sluice	800
17	Balance work of VRB of Manu Nallah, Foot Bridge over Prasanna Nallah, Foot Bridge over Chalanti Nallah, Foot Bridge near Badamandaruni, F. B. near Chalanti Sitapur Nallah near Adibasi Sahi, F.B. over Mahabilapat Nallah.	1000
18	Repair Maintenance of Division & Circle office building	300
19	Renovation of Kochiakoili Nallah System	1500
20	Renovation, Extension & Improvement of Kankadajodi Nallah System	1500
21	Renovation, Extension & Improvement of Baharda Drainage System	1500
22	Survey Investigation and Quality Control Tests of new Projects	400
23	Final Bill Payment of pending FDR works executed during 2007-08 and 2008-09	1200
24	Final Bill Payment of OCC for the work Gochhida Sluice cum VRB	2800
	Total :	30000

Sl. No.	Name of the Work	Outlay (in TRs)
B.	Executive Engineer, Drainage Division, Berhampur	
1	Construction of Foot Bridge over Gania Nalla near village Gopalpur	2070
2	Construction of Foot Bridge over Gania Nalla near village Badhiosta	530
3	Construction of Foot Bridge over Lunda Nalla near village Pandiajholi	1000
4	Renovation of Bahana Nalla & Its Branches	500
5	Improvement to Rajghai & Sirigiri Nalla & Its Branches	400
6	Improvement to Kukudakhai nalla near village Khandadeuli via Sanakhemundi Block	300
7	Improvement to Gumma Nalla U/S of D/W structure under Sanakhemundi Block	500
8	Protection to Beirani Nalla near village Narayanpur	400
9	Improvement to Routaray Nalla near village Manidei Pentha under Sanakhemundi Block	200
10	Improvement Hariaghai Nalla near village Kharudar under Chikiti Block	400
11	Renovation of Nachuni Nalla, Bhanjanagar Block	600
12	Renovation of Kotipada Nalla, Bhanjanagar Block	700
13	Renovation of Gangapur Nalla Aska Block	500
14	Renovation of Kathua Nalla Purushottampur Block Khallikote	800
15	Renovation of Ganjia Nalla Bhanjanagar Block, Bhanjanagar	200
16	Renovation of Kadallia Nalla Jagannathprasad Block	200
17	Renovation of Chatura Nalla, Purushottampur Block Khallikote	300
18	Renovation of Bramhakuda Nalla, Beguniapada Block K.S. Nagar	500
19	Renovation of Agulapada Nalla, Jagannathprasad Block, B. Nagar	300
20	Renovation of Landei Nalla, Belaguntha Block	400
21	Construction of foot bridge over Alekha Nalla near Patrapur under Patrapur Block	500
22	Protection work to Boggi Nalla near village near vilage Badabaranga under Chikiti Block	300
23	Improvement to Manipadia Nalla near village Manipadia under Digapahandi Block	500
24	Protection work to Sankhua Nalla near village Odosingi	500
25	Improvement to Tampara Khama Nalla in Golanda Boripadar	800
26	Improvement and Protection work of Sapua Nalla and its branches	500
27	Construction of Foot Bridge over Batia Nalla near village Badarampalli	400
28	Improvement and Protection work of Nandini Nalla and its branches	400
29	Improvement to Khari Nalla and its branches	400
30	Renovation and construcion of Causeway in Gania Nalla & its branches	500
31	Renovation of Verenda Nalla under Kabisurya Nagar	600
32	Renovation of Sandeswar Nalla under Gangapur Block	400
33	Restoration of Sara Nalla under Belaguntha Block	1700
34	Renovaiton of Bali Nalla under Purusottampur Block	400

Sl. No.	Name of the Work	Outlay (in TRs)
35	Renovation of Chadiapalli Sara Nalla under Buguda Block	600
36	Protection work to Agula Nalla near village Janibilli under Dharakote Block	600
37	Protection work to Nandini Nalla near village Sheragada under Sheragada Block	500
38	Protection to Kaincha Nalla near village Gangapur under Sorada Block	600
39	Renovation of Borosingi Nalla near village Borasingi under Sorada Block	200
40	Improvement o Balia Nalla near village Bandhaguda under Sheragada Block	500
41	Renovation of Gahanja Nalla & Jhadakhandi Nalla & its branches	400
42	Improvement to Khama Nalla	200
43	Improvement to Kharia Branch Nalla	400
44	Renovation of Link Nalla of Kharkhari Nalla	400
45	Improvement to Lunda Nalla Nalla, Tamkei Nalla & Its Branches	400
46	Renovation of Agula Nalla near village Rugumu	400
47	Constn of Foot Bridge over Kaithada Nalla near vill. Gunthapada under Digapahandi Block	1500
48	Construction of Foot Bridge over Badangi Nalla near village Pattapali under Sorada Block	1100
49	Renovation of Kochia Nalla under JN Prasad Block	300
50	Renovation of Kia Nalla	300
51	Renovation of Jiroijholi Nalla under Bhanjanagar Block	200
52	Renovation of Dandaghai Nalla under Polosara Block	300
53	Renovation of Pandarasara Nalla under Aska Block	200
54	Improvement to Ghadaka Nalla and Godara Nalla System	400
55	Improvement to Gudi Nalla near village Nababantha & its branches	300
56	Improvement to branch & link nalla of Bahada Nalla	200
57	Renovation & Improvement to Bodaghai & Kiajhara Nalla and its branches	300
58	Improvement to Kubei Nalla	300
59	Renovation of Kendua Nalla under Beguniapada Block	300
60	Renovation of Gogei Nalla under Sorada Block	200
61	Construction of Foot Bridge Sankhna Nalla near village Guhalapur - I.A.Y Colony	200
	Total :	30000
C.	Executive Engineer, Drainage Division, Bhadrak	
1	Renovation of D.C from B.C. road to Terjodia Nallah and its link drains near village Palashpur.	400
2	Renovation of D.C. from Terjodia to Samal Sahi and its link drains near vilage Palashpur	400
3	Renovation of D.C. of Gaudanasi Nallah (Sapkatia to Salandi)	800
4	Renovation of D.C. of Paitapur Nallah	500

Sl. No.	Name of the Work	Outlay (in TRs)
5	Renovation of D.C. from Kelasahi to Orada Main Drain	1200
6	Renovation of D.C. from Orada to Sankida Main Drain	1200
7	Renovation of D.C. of Gaya Jore	200
8	Renovation of D.C. from Khadijanal to Patta Pola	400
9	Renovation of D.C. from Haladiganda to Mantei River near village Kudakanti	600
10	Renovation of D.C. from Jashipur to Goudanipokhari near village Jashipur	600
11	Renovation of D.C. from Haladiganda to Khandia Nallah near village Paramanandapur	800
12	Renovation of D.C. from Terjuria to Totapada via-Ghanteswar Nallah	400
13	Renovation of D.C. from Gobara Chakka Nallah to Genguti (Badapada)	400
14	Renovation of D. C. from Hinjila to Chhelia via Balighai	500
15	Renovation of D. C. from Terachha Canal to Nuanallah to Genguti	400
16	Renovation of D. C. from Kapali to Rebo Bhanja Mahara	400
17	Renovation of D. C. from Bhadrak to Orali (Chid Chida Nallah)	500
18	Renovation of D. C. from Chabishpada to Orali	500
19	Renovation of D. C. From Chhelia to Khatuapatna	400
20	Construction of inlets to Rebo D.C. near village Ganeshnagar	250
21	Renovation of D. C. from Gobinpur to Rebo	500
22	Renovation of D. C. From Namakana OAE Embankment to Baitarani River	500
23	Renovation of D. C. From Khapanipada to Baitarani River	200
24	Construction of F. B. over Rebo DC near village Polasahi	1800
25	Renovation of D. C. from Balabhadrapur to Kapali	500
26	Construciton of Guard wall over Rebo DC near village Kalinga Ichhapur	250
27	Renovation of D. C. of Kantia	400
28	Construciton of Slope Protection of Rebo D.C. near village Sabanga	500
29	Renovation of D. C. Berhampur to Mirapatna	200
30	Renovation of D. C. from Akhuapal to Railway line	300
31	Renovation of D. C. from Berhampur to Chandanpur	300
32	Construction of Slope Protection & Stone Packing of Rebo D.C. near Pandu Jena Sahi	400
33	Renovation of D. C. from Osanga to Choudhuri Pokhari via-Mohitpur Kandada	400
34	Construction of H.P. culvert over D.C. from Osanga to Choudhuri Pokhari	300
35	Renovation of D. C. from O.C.C. to Panpur Gohiri	200
36	Renovation of D. C. Balimeda Creek to Paikasahi	200
37	Renovation of D. C. from Ekdal to Dayanidhipur	400
38	Renovation of D. C. from O.C.C. to Purusottampur	200
39	Renovation of D. C. of Bhedanaikani	400
40	Renovation of D. C. from Ekdal Jore to Mishrapaur	200
41	Renovation of D. C. from Ricket to Ayodhaya	400
42	Renovation of D. C. from P.P. Cut to Sunamunhi	200

Sl. No.	Name of the Work	Outlay (in TRs)
43	Construction of culvert over D.C. from O.C.C to Dayanidhipur	200
44	Construction of culvert over D.C. from Balimed to Paikasahi	200
45	Construction of F. B. over Safei Nallah	200
46	Construction of culvert over Apartipur D.C.	300
47	Construction of 3 Nos culvert over Bhedanaikani D.C. near village Paikasahi, Chhatrapur & Panpur	500
48	Construction of culvert over D.C. from P.P. cut to Khempur near village Sribatsapur	200
49	Construction of F. B. over D.C. from Ricket to Ramachandrapur near village Ramachandrapur	200
50	Construction of F. B. along with renovation over Damodarpur D.C. near vilage Damodarpur	250
51	Constn of 1 No VRB & FB over DC from Brajanandapur to Dosandi	500
52	Construction of Culvert over D.C. from Munipada to Mantei near village Daruni	150
53	Constn. of F.B. over Jali Nallah near Tini Chhak Banadanda Village	200
54	Stone Ptoection work of River Kapali at Kanhu Charan Rana House at Korua	500
55	Renovation of Gohira Matha Sahi Minor to Arjhatia Nallah under Bonth Block near Odhang G.P.	200
56	Construction of Foot Bridge at Ghantagadia near Randia Fishery office	600
57	Constn of of Foot Bridge at Khaparbanka Muladiha over Kundi Nallah	600
58	Construction of Construction of Outlet on Dhali Nallah (Left Side of Nallah) at Asura	100
59	Construction of Stone Protection work to river Kapali at Baburigaon	800
60	Constn of Sluice at Pallaharganda over Kundi Nallah at Palia Bindha	2200
61	Construction of VRB over Kapali Drainage Channel on Kalhandia to Kapali Railway Station.	2500
	Total :	30000
D.	Executive Engineer, Drainage Division, Bhubaneswar	
1	Storm Water Drainage System in the Permises of Sun Temple of Konark	30000
	Chilika Lagoon	
2	Sectioning of River Luna Length 9.00 Km from Confulence Point to Chilika Lagoon	5900
3	Sectioning of River Daya Part-B length 5.60 Km from Confulence Point	100
4	Sectioning of River Ratnachira from RD 8.50 Km to 23.70 Km	1650
5	Excavation of Jagdal Nalla from RD 3.50 Km to 5.20 Km	13500
6	Sectioning of River Makara from boundary of chilika Lagoon to U/S to Drainage Congestion from Daya, Bhargavi, Luna and Makara outfalling to Chilika Lagoon	5000
7	Dredging of Hatia Nalla	5150
	Sub Total	31300
	Total : (Konark + Chilika)	61300

Sl. No.	Name of the Work	Outlay (in TRs)
8	Improvement to Bhailipur Drainage Channel	4035
9	Improvement of Sunder Nalla	2200
10	Construction of VRB over link drain from Singarpur to Kanapur at Kanapur	850
11	Construction of VRB at village Huruhura over drain Posal- Machhapada	1000
12	Construction of CR-cum -VRB of Kaudia Nalla	150
13	Construction of CR Haldimukhi Nalla	075
14	Sectioning of DC 34 from RD 19980 m to 22500 m	150
15	Improvement to DC no 23 to kadua	500
16	Improvement toDC no-15 to Kadua nalla	500
17	Improvement to Patharbuha Nalla Tail Portion	800
18	Improvement to Patharbuha Nalla from RD 9500 to 11500 m	500
19	Improvement to Drainage Congestion in U/S & D/S of Otanga Bridge Site	500
20	Improvement to Drainage Congestion in U/S & D/S of Tikarapara Bridge Site	650
21	Construction of CR-cum -VRB across drain Bhaliadanda at RD 5850 m	1000
22	Construction of CR-cum -VRB across drain Bhaliadanda at RD 3315 m	1000
23	Construction of WHS across Astaranga Nalla at Ukulai	1000
24	Improvement to Dandabandha Nalla.	490
25	Improvement to drain from Madhipur to Gangua Nalla	400
26	Improvement to Bhagabati Nalla.	550
27	Improvement to Kelahatajora drain from Shardhapur to Rajua.	495
28	Improvement to link drain from sluice along Hadapadar road to jokajhari Nalla	495
29	Renovation to Akhua Nalla from Badheibandha to Athabatia.	500
30	Improvement to drain from Mangaljit M.I.P. towards Tirimi, Chilika.	490
31	Improvement to Rana Nadi from Patnibara to Kathapoili	450
32	Improvement to Drain from Kesharpur to Manijapur.	460
33	Improvement to Drain from Atharabatia to Aswasthapari	800
34	Improvement to Ichhapur Nalla to Jokajhari	350
35	Improvement to Drain from Bandhapalla-Kukudajhari to Mangaljit M.I.P.	495
36	Improvement to Kushumi Link drain from Matha-Khajuria to Paikasahi	450
37	Improvement to Jharinalla drain from Balishinsha to Sunamunhi.	400
38	Improvement to drain from Sardhapur to Chorakhola.	350
39	Improvement to Rana Nadi from Patapur to Dolanapur	450
40	Improvement to DC no-17, 19 and link drain to DC-18 near Dihuda, Gabasinga, Bisarpur	800
41	Improvement to DC-34 from Ranapokhari to Palapachi	1500
42	Costruction of VRB at Gopinathpur	450
43	Costruction of VRB at Kasipur	450

Sl. No.	Name of the Work	Outlay (in TRs)
44	Improvement to DC-9	1200
45	Improvement to DC-6	800
46	Renovation to drainage channel from Dokhandpur to DC - 38, from Arada Gahir to DC-38 and from Solahala Gahira to DC-38.	800
47	Renovation to drainage channel from Bhandaridanda to DC-38, from Badabhimadaspur to DC-38 and Sanabhimadaspur to DC-38.	700
48	Renovation to drainage channel from Bagulipari to Sriramchandrapur, from Sriramchandrapur to Ghasibhabanipur and from Alasalanga to Parahat	650
49	Renovation to drainage channel from Chandapara to Sirei (DC-41) and from Nuapada to Sireisara drain.	600
50	Renovation to drainage channel from Indira Sankha to DC-38 and from Oterkera to Samantarapur to DC-38.	500
51	Renovation to drainage channel from Prachandapur to DC-38	550
52	Improvement to link drain to Kadua nalla	250
53	Construction of WHS cum VRB at RD 1.07 km of Dihabari Link drain	150
54	Improvement to link drain from Ohala Khaliasahi to DC-21	400
55	Improvement to link drain from Pathanamara & Hansi to DC-21	300
56	Improvement to drain from Chandanpokhari to Bhargavi I/s sluice at Balanga	400
57	Improvement to DC-34 at Uchhupur U/S & D/S	400
58	Improvement to link drain from Nuasantha to Dipideuli to DC-34	300
59	Impvt to River Daya at Makara offtaking point near Botalama village	300
60	Renovation to drainage channel from Gada Beguniapada to Tara DC -24	400
61	Renovation to drainage channel from Paikapada to Teispur DC - 37	350
62	Renovation to drainage channel (Link Drain) from Merdha Shi to Karadi	140
63	Renovation to drainage channel (Link Drain) from Nikhiragobindapur to Bhailpur Channel	140
64	Renovation to drainage channel from Lohapur Tarakaj	300
65	Renovation to drainage channel from Kausalyapur to Patsahanipur	250
66	Renovation to drainage channel from Teisipur to Bastari Nallah (Sripatipur) Link to Luna	300
67	Renovation to drainage channel from Dethipada to Janghar Link to Luna	450
68	Improvement to Rana Nadi from Sarua to Patnibara	450
69	Renovation to drainage channel from Gadianisara to Kalyanpur (DC 27) outfall to Luna	200
70	Renovation to drainage channel from Kharkhara Sluice to Patia River	200
71	Renovation to drainage channel from Indipur to Nadakhanda	420
72	Improvement to Link Drain to DC-35 near Nuasantha	300
73	Improvement to Talasua Link Drain outfalling to Kadua Drain	500
74	Improvement to DC-14	600
	Sub-Total :	39035
	Total :	100335

Sl. No.	Name of the Work	Outlay (in TRs)
E.	Executive Engineer, Drainage Division, Chandikhol	
1	Construction of Division office building at Chandikhol Agrt. No. 105F2/2011-12	3721
2	Bank Protection work over DC-6 near village Bidyadharpur under Mahanga Consituency Agrt. No. 56F2/2011-12	1546
3	Construction of VRB at RD 3800 M of Bandal Link Drain Agrt. No. 125 F2/2011-12	2852
4	Construction of FB near Chakarpur over DC-6 Agrt. No. 57 F2/2011-12	500
5	Renovation of Solapat Bhabilopat drain out falling to river Kimiria Agrt. No. 147 F2/2011-12	1755
6	Renovation of Link Drain from Gajikhal to Bandal	600
7	Renovation of Odamaspur Link Drain	500
8	Renovation of Itamunduli Link Drain from 0 to 1260 M	380
9	Construction of VRB over Belpal Drainage Cum Creek near village Bandhapada	330
10	Renovation of Balisahipatna Drainage cum Creek from RD 00 to 4000 M outfalling to River Brahmani	300
11	Renovation of Dhanadia Drainage Cum Creek from RD 00 to 3000 M outfalling to River Brahmani	360
12	Renovation of Podagayaspur to Gobari Drainage cum Creek from RD 00 to 1850 M with 2 Nos link drain.	440
13	Renovation of Thauri Drainage cum Creek from RD 00 to 2100 M	060
14	Construction of VRB over Chandi Baunsamula Drainage cum Creek near village Badhi	510
15	Constn of Pile FB at RD 740 M over Link Drain of Hatia Drainage Cut near village Thauri	850
16	Constn of Pile FB at RD 1680 M over Link Drain of Hatia Drainage cut near vilage Thauri	850
17	Constn of Pile FB at RD 2530 M over Link Drain of Hatia Drainage cut near village Thauri	1000
18	Construction of VRB over drainage cut Thauri to Nimbera	700
19	Construction f VRB at Biribati Adibhasi Sahi over Padalo Maradapur Drainage Cut	1000
20	Renovation of Kaupada Drainage cut from RD 00 to 8 Km of Gobari Drainage Cut	600
21	Construction of VRB over Drainage Cut Bramhani Sahi to Lunia Chhak near vilalge Badanaukana	1100
22	Construction of VRB over Drainage Cut of Adhajore to Sanakurpa near village Bilikana	1500
23	Construction of VRB over Gobindapur Drainage Cut	800
24	Renovation of Duhuria Drainage Cut	100
25	Construciton of Pile FB over Kendua Nalla near Village Muraripur	500
26	Construction of Retaining wall with slope Protection of Chikana Sluice over Jokei Nalla	450
27	Construction of Pile FB over Kusabhadra Drainage Channel at RD 5760 M near Temple Baruneswar	1192

Sl. No.	Name of the Work	Outlay (in TRs)
28	Renovation of Soradhia Barikula Link Drain from RD 0.00 to 5.50 Km	600
29	Killaghat Nalla from Irrigation I.B to Baitarani from RD 0.00 to 4.3 Km	600
30	Construciton of Pile F. B. over Kendua Nalla near village Narigaon	1500
31	Construction of Pile FB over Kotamahara Nalla near village Bhelanga	1000
32	Renovation of Link Drain of Baitarani from Patarakana to Jalabandhi	800
33	Construction of Pile FB over Kusabhadra Link Drain-1 near village Pairakha	1000
	Total :	29996
F.	Executive Engineer, Drainage Division, Cuttack	
1	Clearance of unpaid amount of works taken up under State Plan during 2011-12	3000
2	Clearance of unpaid amount of works taken up under Maintainance during 2011-12	3000
3	Clearance of unpaid amount of works taken up under Check Dam during 2011-12	2000
4	Clearance of unpaid amount of works taken up under Critical Lumps during 2011-12	1000
5	Protection to Scoured Bank of Malia Drain at Chanduli from RD 12.200 to 12.300 Km	1000
6	Excavation of Water Course from Mahanadi Flow Channel to Rananadi	1500
7	Clearance of Flow Channel from Ramachandrapur to Tulasipur	1000
8	Closing of out flanked portion of cross regulator of Khuntabilla D/C	300
9	Improvement of Satamana Balijore Link Drain	500
10	Improvement of Chatara Balisree Link Drain	200
11	Construciton of Hume Pipe Calvert on Charigharia D/C at Charigharia	400
12	Protection to Siaria D/C at RD 2.500 Km to 2.575 Km	300
13	Protection of Siaria D/C at RD 2.80 Km to 2.90 Km	500
14	Improvement to Karilo Kutilo D/C	500
15	Improvement to Satabatia D/C	500
16	Improvement to Gohira D/C	500
17	Improvement to Kiakoili D/C	400
18	Improvement to Palaghosara to Badabandha D/C	500
19	Improvement to Paikrapur D/C	500
20	Improvement to Kadei D/C	500
21	Improvement to Torania D/C	500
22	Improvement to Oranda D/C	500
23	Improvement to Imam Nagar D/C	500
24	Improvement to Baramana D/C	200
25	Improvement to Uchhapada D/C	500
26	Improvement to Sunadiha D/C	600
27	Improvement to Thakurnali D/C	1800
28	Improvement to Teligunia D/C	600
29	Improvement to Chadhekuda / Badatola D/C	700

Sl. No.	Name of the Work	Outlay (in TRs)
30	Improvement to Singhpur / Potak D/C	800
31	Improvement to Nachipada / Guruguria D/C	800
32	Improvement to Baleipur D/C	700
33	Improvement to Ordailo to Badabelari D/C	800
34	Improvement to Balia D/C	400
35	Improvement to Jaisola D/C	450
36	Improvement to Nagpur D/C	500
37	Improvement to Madhapur D/C	500
38	Improvement to Sidhala Rankei D/C	500
39	Improvement to Balibhounri D/C	200
40	Improvement to Denga D/C	200
41	Improvement to Puakhai D/C	300
42	Improvement to Madhyasasan to Mahatola D/C	500
43	Improvement to Dhanua D/C	820
44	Improvement to Hayatpur D/C	450
45	Improvement to Link Drain of Dhanua D/C	500
46	Improvement to Arilo D/C	460
47	Improvement to Singarpur Haripa D/C	490
48	Improvement to Kanijore D/C	300
49	Improvement to Banikuda D/C	330
	Total :	34000
	Total - (Major Works)	254331
1	Work-Charged / NMR Salary	19668
2	M & E	4800
3	T & P	1200
4	Storm Water	001
	Total :	25669
	Grand Total - (Drainage)	280000

Annexure-IV

Minor Irrigation Projects

Sl. No.	Name of the Scheme/ Project/ Work	District(s) /State	Outlay (in TRs)
1	2	3	4
C.	Minor Irrigation Projects under RIDF		
	RIDF – XII		
1.	Kantheswarpur	Bargarh	1000
2.	Kuthurla	Bolangir	001
3.	Naikenjore	Bolangir	001
4.	Bandhapada	Boudh	001
5.	Tarava	Boudh	500
6.	Neelanalla	Gajapati	1000
7.	Badambakhola	Ganjam	001
8.	Kaithaghahi, Mahupadar	Ganjam	001
9.	Kharkhari, Deuliapada	Ganjam	001
10.	Lembughai, Ustapada	Ganjam	001
11.	Thelia Nalla	Jharsuguda	1000
12.	Dilabadi	Boudh	001
13.	Ratiaguda	Koraput	001
14.	Pendraguda	Malkangiri	100
15.	Sagarmunda	Nawarangpur	001
16.	Ghodabandhani	Nayagarh	2000
17.	Kharupani	Nuapada	001
18.	Kulthijore	Subarnapur	001
	RIDF – XIII		
19.	Jobrajore	Bolangir	2000
20.	Reno. to Janara	Angul	200
21.	Constn. of Similibahal	Dhenkanal	001
22.	Constn. of Joram	Mayurbhanj	1000
23.	Ranidhar	Nuapada	001
24.	Constn. of Sananai M.I.P	Mayurbhanj	5000
25.	Reno. to Manada M.I.P	Mayurbhanj	001
26.	Kanabindha	Ganjam	001
27.	Constn. of Chakidi	Mayurbhanj	500
28.	Constn. of Kanighai	Dhenkanal	001
29.	Constn. of Kanja	Angul	2000
30.	Constn. of Saharagurujanga	Angul	400
31.	Constn. of Saladihi	Bargarh	4000
32.	Reno. to Nuabandha	Dhenkanal	1000

Sl. No.	Name of the Scheme/ Project/ Work	District(s) /State	Outlay (in TRs)
33.	Constn. of Chaulia	Dhenkanal	4000
34.	Dudhiajharanalla	Ganjam	001
35.	Natuchuninalla, Sisunda	Ganjam	001
36.	Andharinala MIP	Ganjam	1000
37.	Kanchudianalla	Ganjam	001
38.	Badasagar Jharipadar	Ganjam	2000
39.	Constn. of Gandanala	Jajpur	4000
40.	Matilijore	Kalahandi	2000
41.	Atharnalla	Kalahandi	001
42.	Reno. to Arikul	Mayurbhanj	3000
43.	Constn. of Majhiakhanda	Nayagarh	10000
44.	Constn. of Bhalujhar	Nayagarh	5000
45.	Constn. of Dimisar	Nayagarh	10000
46.	Constn. of Samaleimunda	Sundargarh	300
47.	Reno. to Ghoghar	Sundargarh	3000
48.	Constn. of Chakramal	Sundargarh	3000
	RIDF – XIV		
49.	Chacharabhata	Nuapada	3000
50.	Ghurudia	Angul	001
51.	Khuntabandha	Bargarh	1000
52.	Tusuranalla	Bargarh	001
53.	Akalijharan	Bargarh	001
54.	Kumkudinala	Boudh	2000
55.	Kharakhari D/W, Odanai	Ganjam	001
56.	Taptapaninalla	Ganjam	001
57.	Arjunnalla	Ganjam	5000
58.	Santarabandha, Pichuli	Ganjam	001
59.	Jaupanianalla	Ganjam	800
60.	Borigaon	Ganjam	600
61.	Khandra MIP	Ganjam	001
62.	Tudujulinalla	Kandhamal	3000
63.	Patilo	Keonjhar	001
64.	Badheikhunti	Khurda	2000
65.	Dahuka	Nayagarh	9000
66.	Kharikuti	Rayagada	001
67.	Badajharan	Sambalpur	001
68.	Banjarijharan	Sambalpur	001
69.	Gadiajore	Sundargarh	001
70.	Bhoipalli	Sundargarh	2000
71.	Raghunathpurganja	Balasore	001

Sl. No.	Name of the Scheme/ Project/ Work	District(s) /State	Outlay (in TRs)
72.	Sunamudi	Bargarh	3000
73.	Podamal (Sankhamal)	Sambalpur	5000
74.	Sradhapur	Nuapada	2000
75.	Reno. to Rangiabandha	Balasore	001
76.	Constn. of Panchalingeswar	Balasore	600
77.	Constn. of Gangajodi	Balasore	001
78.	Constn. of Kutmansingh	Balasore	001
79.	Constn. of Kochiakoli	Balasore	1000
80.	Constn. of Bilasunibandha	Balasore	001
81.	Jamunapali	Bolangir	001
82.	Talpali	Bolangir	100
83.	Saraspita	Bolangir	1000
84.	Patrapali	Bolangir	1000
85.	Constn. of Sunajhari	Dhenkanal	2000
86.	Reno. to Krushnasagar Donuru	Gajapati	001
87.	Landeinalla	Ganjam	1000
88.	Khajurinalla	Ganjam	001
89.	Bhusubhusa	Ganjam	500
90.	Rajaghai	Ganjam	900
91.	Constn. of Jharparan	Jharsuguda	1000
92.	Bada Kenduguda	Kalahandi	001
93.	Sirliguda	Kalahandi	001
94.	Constn. of Laliachancheda	Kandhamal	400
95.	Constn. of Tadikheta	Kandhamal	037
96.	Constn. of Petujodinalla	Koraput	1000
97.	Constn. of Matigurha	Malkangiri	1000
98.	Constn. of Deuli	Mayurbhanj	3000
99.	Constn. of Thakarpal	Mayurbhanj	1000
100.	Constn. of Gohirapal	Mayurbhanj	1000
101.	Constn. of Harikrishnapur	Mayurbhanj	1000
102.	Constn. of Kadalibadi	Mayurbhanj	1000
103.	Constn. of Titiri	Mayurbhanj	1000
104.	Constn. of Dasisole	Mayurbhanj	3000
105.	Constn. of Chaturi	Mayurbhanj	2000
106.	Constn. of Mituani	Mayurbhanj	2000
107.	Constn. of Betajharan	Mayurbhanj	3000
108.	Constn. of Sukhilahar	Mayurbhanj	001
109.	Constn. of Chandusahi	Mayurbhanj	3000
110.	Constn. of Purnachandrapur	Mayurbhanj	001
111.	Podagada	Nawarangpur	1000

Sl. No.	Name of the Scheme/ Project/ Work	District(s) /State	Outlay (in TRs)
112.	Jobaguda	Nawarangpur	001
113.	Sarguli	Nawarangpur	001
114.	Koharadonguri	Nawarangpur	001
115.	Constn. of Thakathaki nalla	Nayagarh	8000
116.	Constn. of Kaibalyapur	Nayagarh	9000
117.	Constn. of Brahmanipalli	Sambalpur	2000
118.	Constn. of Manikmundakata	Sambalpur	001
119.	Constn. of Gondakuna	Sambalpur	7000
120.	Constn. of Sunatunguri	Sambalpur	2000
121.	Sahajlatha	Subarnapur	300
122.	Constn. of Sidharamunda	Sundargarh	2000
123.	Constn. of Bijamunda	Sundargarh	2000
124.	Constn. of Nandisugudanalla	Sundargarh	3000
125.	Constn. of Pithabhuin	Sundargarh	2000
126.	Constn. of Baurimunda	Sundargarh	001
127.	Constn. of Garjanjoremunda	Sundargarh	3000
128.	Angapada	Angul	2000
129.	Baliani	Angul	2000
130.	Karadabahal	Angul	2000
131.	Tangianisa	Angul	2000
132.	Banjikata	Bolangir	2000
133.	Bileisahi	Bolangir	2000
134.	Changaria	Bolangir	2000
135.	Dhumabhata	Bolangir	2000
136.	Ghagara	Bolangir	2000
137.	Junapadar	Bolangir	700
138.	Kadalimunda	Bolangir	001
139.	Nuamunda	Bolangir	4000
140.	Ostali	Bolangir	2000
141.	Samarsingh	Bolangir	2000
142.	Goudi	Bhadrak	2000
143.	Khajuridiha	Balasore	2000
144.	Oliapatna	Balasore	2000
145.	Tampo	Balasore	2000
146.	Constn. of Jhilinala	Bargarh	200
147.	Ghanteswari	Bhadrak	2000
148.	Dedhel	Bolangir	5000
149.	Dumerkata	Bolangir	400
150.	Dumermunda	Bolangir	2000
151.	Kharjurmunda	Bolangir	001

Sl. No.	Name of the Scheme/ Project/ Work	District(s) /State	Outlay (in TRs)
152.	Narendrasagar	Bolangir	001
153.	Runimahul	Bolangir	2000
154.	Sialjorekata	Bolangir	600
155.	Theikomunda	Bolangir	1000
156.	Thesamunda	Bolangir	6000
157.	Rajabandha	Boudh	800
158.	Sargipalli	Boudh	1000
159.	Bhuasunibandha	Dhenkanal	2000
160.	Sapuajhara	Dhenkanal	3000
161.	Badagam	Gajapati	400
162.	Badakhani	Gajapati	500
163.	Buruda	Gajapati	200
164.	Dhanupeta	Gajapati	1000
165.	Kalamatianalla	Gajapati	001
166.	Kankadaguda	Gajapati	900
167.	Luhangarh	Gajapati	1000
168.	Marichima	Gajapati	1000
169.	Narangi	Gajapati	1000
170.	Tangiasahi	Gajapati	2000
171.	Saraghai Kamagada	Ganjam	1000
172.	Bhatajore	Kalahandi	001
173.	Kutingpadar	Kalahandi	800
174.	Lamer	Kalahandi	2000
175.	Dabarbandha	Kandhamal	1000
176.	Dagamaha	Kandhamal	2000
177.	Pisupadar	Kandhamal	001
178.	Rankighai	Kandhamal	600
179.	Sinduragada	Kandhamal	1000
180.	Balijodi	Keonjhar	400
181.	Bhimkand	Keonjhar	200
182.	Lajakuli	Keonjhar	001
183.	Murga	Keonjhar	001
184.	Santabahal	Keonjhar	001
185.	Chamundarashi	Malkangiri	2000
186.	Kenduguda	Malkangiri	3000
187.	Pathurikati	Mayurbhanj	1000
188.	Dighiposi	Mayurbhanj	1000
189.	Jagannathpur	Mayurbhanj	001
190.	Tumtumka, Katuribenta	Mayurbhanj	1000
191.	Constn. of Kalyani	Rayagada	2000

Sl. No.	Name of the Scheme/ Project/ Work	District(s) /State	Outlay (in TRs)
192.	Amjharan	Sambalpur	2000
193.	Kurmuloi	Sambalpur	1000
194.	Kirabandha	Sambalpur	1000
195.	Dalkata	Subarnapur	001
196.	Kusadadar	Subarnapur	1000
197.	Bhedabahal	Sundargarh	1000
198.	Medinipur	Sundargarh	2000
199.	Nandighosmunda	Sundargarh	4000
200.	Sankarposh	Sundargarh	5000
201.	Krutibaspur	Angul	1000
202.	Constn. of Utalijore Stage-II	Bargarh	5000
203.	Constn. of Kanpurinalla	Bargarh	5000
204.	Constn. of Sureswari	Angul	001
205.	Raghunathpali	Jharsuguda	1000
206.	Belamunda	Jharsuguda	1000
207.	Gahamabandh	Nayagarh	2000
208.	Girigobardhan	Nayagarh	1000
	RIDF – XV		
209.	Dholodimiri	Angul	2000
210.	Rasikarajpur	Gajapati	2000
211.	Giringa	Ganjam	2000
	RIDF – XVI		
212.	Mulbar	Bargarh	2000
213.	Kankadajhar	Cuttack	2000
214.	Lenka Panka	Ganjam	2000
215.	Gouda goutha	Ganjam	2000
216.	Ghadgadimal	Bargarh	1000
217.	Ainlabhata	Bargarh	1000
218.	Nuagarh	Bargarh	1000
219.	Bhatapur	Bargarh	3000
220.	Salepali	Bargarh	2000
221.	Balijore	Bargarh	2000
222.	Kharamundakata	Bargarh	2000
223.	Budhimal	Bargarh	2000
224.	Gobindapur	Bargarh	2000
225.	Nunimundi	Ganjam	2000
226.	Brahamanpadar	Ganjam	2000
227.	Hetta Nalla	Ganjam	2000
228.	Ganianalla	Ganjam	2000
229.	Kankadaghai	Ganjam	2000

Sl. No.	Name of the Scheme/ Project/ Work	District(s) /State	Outlay (in TRs)
230.	Lokanath Bandha	Ganjam	2000
231.	Bantanalla	Ganjam	1000
232.	Hadusahujhola	Ganjam	1000
233.	Kadalianalla	Ganjam	1000
234.	Sapanga	Ganjam	1000
235.	Kurtaie	Ganjam	1000
236.	Petakhalghai	Ganjam	1000
237.	Na-ghari	Ganjam	1000
238.	Belumara	Ganjam	1000
239.	Selpaguda	Ganjam	1000
240.	Khamansai	Ganjam	1000
241.	Meduakul	Jajpur	1000
242.	Indragada	Kandhamal	1000
243.	Guptapada	Khurda	001
244.	Potajogibandha	Khurda	1000
245.	Batasia	Khurda	1000
246.	Talabandha	Khurda	1000
247.	Tulasinalla	Nayagarh	1000
248.	Janipadar	Nayagarh	1000
249.	Khairagadia	Nayagarh	1000
250.	Balijhari	Nayagarh	1000
251.	Ambalimba	Nayagarh	1000
252.	Hanadiha	Nayagarh	1000
253.	Kuchinda	Sambalpur	1000
254.	Ranjan	Sambalpur	1000
255.	Sajipatna Pokhari	Balasore	1000
256.	Kuto Pokhari	Balasore	1000
257.	Brajapokhari	Balasore	1000
258.	Banjipali	Bargarh	1000
259.	Baradhangidi	Ganjam	1000
260.	Kokalaba	Ganjam	1000
261.	Sidhipur	Ganjam	1000
262.	Babulibandha	Ganjam	1000
263.	Mulajhar	Ganjam	1000
264.	Badanalla	Ganjam	1000
265.	Khuntpalli	Sambalpur	1000
266.	Loamal	Sambalpur	1000
267.	Budhipali	Bargarh	1000
268.	Jharmunda	Bargarh	1000
269.	Khaliakata	Bargarh	1000

Sl. No.	Name of the Scheme/ Project/ Work	District(s) /State	Outlay (in TRs)
270.	Bhubaneswarpurkata	Bargarh	1000
271.	Upper Laigaon	Boudh	1000
272.	Andharinala	Boudh	1000
273.	Babada	Boudh	1000
274.	Saiberni	Sambalpur	1000
	RIDF – XVII		
275.	Dangorkermali	Bargarh	1000
276.	Kalabahalkata	Bargarh	1000
277.	Sargipalikata	Bargarh	1000
278.	Tengapali	Bargarh	1000
279.	Sanbousenkata	Bargarh	1000
280.	Bhaluchuankata	Bargarh	1000
281.	Beniachalkata	Bargarh	1000
282.	Harichandanpur	Angul	1000
283.	Kutugaon	Angul	1000
284.	Putuapalli	Angul	1000
285.	Rukuna	Angul	1000
286.	Sanjamura	Angul	1000
287.	Kapasias	Dhenkanal	1000
288.	Pipe line Projects under RIDF		20000
	Tota RIDF (M.I.Flow)=		420000
D.	Minor Irrigation Projects under AIBP		
	AIBP-III		
1.	Jagamuguda	Koraput	001
2.	Kankubadi	Rayagada	001
3.	Talijore	Kalahandi	001
4.	Ankamara	Bolangir	001
5.	Brahmanijore	Bolangir	001
6.	Sahajoti	Nuapada	3000
7.	Sahajajore	Nuapada	001
8.	Rangamguda	Malkangiri	2000
9.	Dablajore	Bolangir	001
10.	Randikona	Rayagada	001
11.	Jatakhali	Kalahandi	001
12.	Subarnrekha	Bolangir	001
13.	Karanjanalla	Rayagada	001
14.	Laxmipur	Rayagada	10000
15.	Maruburu	Koraput	10000
16.	Adamunda	Koraput	001
17.	Chacharabhata	Nuapada	10000

Sl. No.	Name of the Scheme/ Project/ Work	District(s) /State	Outlay (in TRs)
18.	Badatema	Koraput	001
19.	Tunpar	Koraput	001
20.	Baghri	Koraput	001
	AIBP-IV		
21.	Mangolajore	Kalahandi	800
22.	Pankhajore	Kalahandi	5000
23.	Subarnarekha	Kalahandi	5000
24.	Karunanalla	Kalahandi	001
25.	Tiljodi	Kalahandi	3500
26.	Budhidalabahal	Kalahandi	681
27.	Kotlabhata	Nuapada	4900
28.	Nagapara	Nuapada	001
29.	Jarahigurha	Malkangiri	4000
30.	MITank at MV-121	Malkangiri	4500
31.	Kursi	Nawarangpur	5000
32.	Kacharapara-IV	Nawarangpur	600
33.	Budrapara	Nawarangpur	900
34.	Bhaluguda	Nawarangpur	4000
35.	Damkipali	Bolangir	1500
36.	Dumerchuan	Bolangir	6500
37.	Suliabahal	Bolangir	1700
38.	Batharla	Bolangir	001
39.	Dangarkata	Subarnapur	3000
40.	Nuapali	Subarnapur	1200
41.	Daitarimunda	Bolangir	7000
42.	Jamjore	Bolangir	3500
43.	Jamunda	Bolangir	1200
44.	Semelmunda	Bolangir	5500
45.	Uderpur	Bolangir	6000
46.	Andhirajore	Kalahandi	5000
47.	Barhanalla	Kalahandi	5000
48.	Chitlparha	Kalahandi	600
49.	Dhobenchancharanalla	Kalahandi	5000
50.	Gadiajore	Kalahandi	5000
51.	Tukuguda	Kalahandi	5000
52.	Koyagiri	Malkangiri	8400
53.	Lakitigurha	Malkangiri	5000
54.	Simakonda	Malkangiri	5000
55.	Tamasanalla	Malkangiri	5000
56.	Temurapalli	Malkangiri	5000

Sl. No.	Name of the Scheme/ Project/ Work	District(s) /State	Outlay (in TRs)
57.	Asanga	Nawarangpur	5000
58.	Chatalahandi	Nawarangpur	5000
59.	Dharli	Nawarangpur	5000
60.	Kurlughati	Nawarangpur	001
61.	Pipe line Projects under AIBP		100000
	Total AIBP (M.I.Flow)l=		280000
E.	Improvement of Water Bodies with domestic support		
1.	Pipe line Projects under RR&R		
i.	Ongoing (949 Nos)	Whole State	750000
ii.	New		
	Total RR&R (M.I.Flow)l=		750000
G.	Construction of control structure for instream storage schemes-Check dam under State Plan	Whole State	
1.	Pipe line Projects under Check dam		
i.	Ongoing (2144 Nos)	Whole State	1000000
ii.	New (922 Nos)	Whole State	750000
	Total Check Dams (M.I.Flow)l=		1750000
H.	Orissa Community Tanks Management Project (EAP)		
1.	Pipe line Projects under OCTMP		
i.	Ongoing (50 Nos)	Whole State	100000
ii.	New (256 Nos)	Whole State	425000
	Total OCTMP (M.I.Flow)l=		525000
I.	Construction of control structure for instream storage schemes-Check dam underSCA for Special Programmes for KBK districts		
1.	Pipe line Projects under Check dam		
i.	Ongoing		
ii.	New (120 Nos)	Whole State	161350
	Total SCA for KBK (M.I.Flow)l=		161350
J.	Mega Lift Projects under State Plan	Whole State	
1.	Pipe line Projects under Mega lift	Whole State	1500000
	Total Mega lift (M.I.Flow)l=		1500000
K.	Clearance of Liabilities, Decretal dues, S&I of MIPs, Capacity building for RIDF/Other Projects and MIPs under State Plan	Whole State	
1.	Pipe line Projects State Plan	Whole State	90000
	Total State Plan (M.I.Flow)l=		90000
	G.Total (M.I.Flow)l=		5476350

Chapter-III

Reform measures & Policy initiatives

* * * * *

Change in Design & Delivery Mechanism of Existing Schemes:

Majority of the schemes presently under implementation for development of water resources are funded by Government of India, World Bank, Asian Development Bank, JICA and NABARD. These funding agencies have formulated guidelines for smooth implementation of the concerned schemes. They have also modified their guidelines from time to time on review of the performance of the schemes. The Department on its own can not change the design and delivery mechanism of these schemes. However, suggestions regarding change in design and delivery mechanism of the schemes are given in different forums such as Workshops, Seminars and Meetings etc.

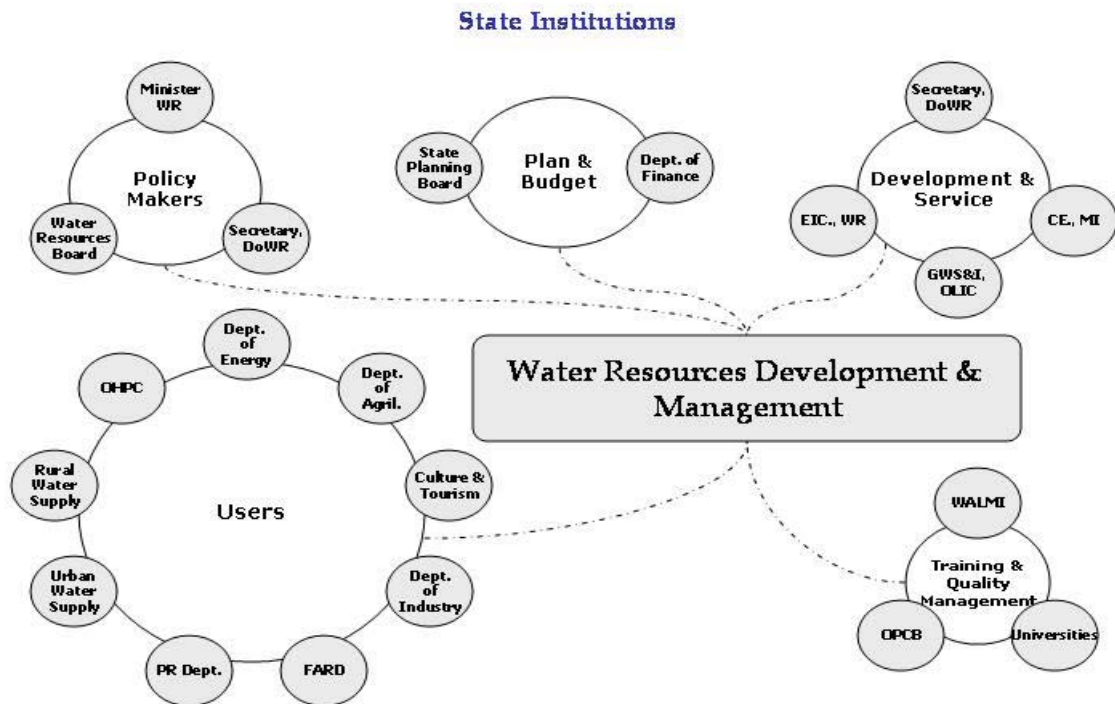
Policy Initiatives:

State Water Policy : Water resources available in the state should be brought within the category of utilizable resources to the maximum possible extent. Competing demands on water resources from industrial, domestic, environmental, Irrigation and other sectors essentially warrants an integrated water resources development and management approach. To achieve this objective, policy initiatives have been taken at the state and national level. The state formulated its first State Water Policy in 1994 following the principle enunciated in the National Water Policy 1987. In the meantime, a number of developments have taken place; new information and knowledge are now available and new issues and challenges have emerged in the field of development and management of water resources. It was therefore felt necessary by the State Government to review the State Water Policy, 1994 and a new Water Policy called “Odisha State Water Policy-2007” has been approved. The river basin is taken as a logical hydrological unit of management. The priority in allocation of water as per State Water Policy 2007 is given below.

1. Drinking water and domestic use (human and animal consumption)
2. Ecology
3. Irrigation, Agriculture and other related activities including Fisheries.
4. Hydro Power
5. Industries including Agro Industries.
6. Navigation and other uses such as tourism.

State Water Plan: The State Water Plan will not only allocate the water resource to different sectors of priority, it will also have a perspective plan for development of these resources in important areas like drinking water, irrigation, hydro-power etc. While developing these resources, people's need preservation of the ecological balance and enrichment of the ecosystem would receive adequate attention. The plan will be holistic, participatory and environmentally sustainable.

Institutional Framework:



(A) State Planning Board: A key organization of State Government, the Board provides policy direction in formulating plan scenario and both short term and long term development objectives. The Board has a member for Water Resources Development of the State.

(B) Water Resources Board: Government of Odisha constituted the Water Resources Board, the apex body in water sector with Chief Secretary of the State as Chairman. The Water Resources Board has ten departmental Secretaries as members and Engineer-in-Chief as Member- Secretary. The Board is the highest forum to ensure interdepartmental co-ordination and is involved in water planning and development processes such as formulation of State water policy, integrated planning of water resources, allocation of water resources to various water use sectors, prioritization of water resources development, environment management plan, etc.

(C) Water Resources Department: The Department is responsible for planning, developing and managing the State's water resources for irrigation, bulk water supply, flood control and drainage along with implementation of Major, Medium, Minor irrigation projects and their operation and maintenance.

Legal Framework:

(A) Odisha Irrigation Act and Rule: The Odisha Irrigation Act came into force in 1959 and the Odisha Irrigation Rules in 1961. The Act covers the legal aspects related to construction and maintenance of irrigation works. It also prescribes the basic water rates to be made applicable to various class of irrigation systems for which water is to be supplied. The Odisha Irrigation Rules were amended in 2002 for revision of basic water rates for various class of irrigation system & as well as for crops other than the basic cereal crops. Rates for water supplied for purposes other than irrigation works were also amended in 1998 to cover the industrial and municipal water supply.

Odisha Pani Panchayat Act & Rule: The primary objective of this Act is to ensure optimum utilization of water by farmers for improving agricultural production, to involve farmers' organizations in the management and maintenance of the irrigation system to ensure dependable supply and distribution of water. The Pani Panchayat Rule provides guidelines for formation, membership, duties and responsibilities of Water Users' Associations.

Rehabilitation & Resettlement Policy: Government of Odisha has been pursuing various development initiatives to improve the quality of lives. Ensuring social justice being one of the major cornerstones of development, the Government always proactively tries to make sure people's participation in development process. In spite of Government's intention to bring development to the people, development interventions do at times create undesirable consequences. Displacement due to large development projects is one such phenomenon. Government of Orissa has been responding to this problem through various projects specific Resettlement & Rehabilitation Policy and plans. The basic objectives of R&R policy 2006 are:

- To minimize displacement as far as possible
- Recognise the concern of the affected communities
- Pay special attention to the needs of vulnerable sections like women, indigenous people, children, physically challenged etc.
- To ensure livelihood and environment sustainability through participatory and transparent process
- To ensure proper implementation, monitoring, conflict resolution and grievance redressal through appropriate mechanism.

*** **

Chapter-IV Performance of Programmes & Schemes

*** **

Target set in outcome budget 2011-12 in different schemes/programmes and its achievement up to end of December 2011 is given in the table below.

Table-4.1
PHYSICAL & FINANCIAL STATUS AS ON DECEMER 2011

Sl. No	Schemes /Programme	Budget Estimate (in TRS)	Expdr. by Dec 2011 (TRS)	Physical details	Physical Target	Achmnt. by Dec 2011
1	AIBP					
a.	Major & Medium	12140000	5631548	Irr.Potential (in ha)	41046	50
b.	Minor (flow)	500000	2066	Irr. Potential (in ha)	3500	40
	Sub-Total	12640000	5633614		44546	90
2.	RIDF					
a.	Major & Medium	950000	491153	Irr.Potential (in ha)	9464	2318
b.	Minor (flow)	500000	105090	Irr.Potential (in ha)	12500	759
c.	Lift Irr.(HCAD)	20000	20000	Irr.Potential (in ha)	300	280
d.	FC & Drainage	1410000	793812	Water logged Area Retrieval (ha)	8000	3000
	Sub-Total	2880000	1410055	Agril land protection(Ha)	10000	3000
3.	BKVY					
a.	LIPs under RIDF	1500000	1085253	Irr.Potential (in ha)	22000	10895
b.	LIPs under SCA	100000	229978	Irr.Potential (in ha)	1500	3105
	Sub-Total	1600000	1315231			
4.	Check Dam					
a.	Major & Medium	250000	0	Check Dam (No)	100	72
b.	Minor (flow)	1750000	699246	Check Dam (No)	1840	635
	Sub-Total	2000000	699246			
5.	EAP					
a	Rengali(LBC)	700000	499918	Irr.Potential (in ha)	0	0
b.	OIIAWMIP	500000	273661	Renovation work	No quantifiable target	

Sl. No	Schemes /Programme	Budget Estimate (in TRS)	Expdr. by Dec 2011 (TRS)	Physical details	Physical Target	Achmnt. by Dec 2011
c.	OCTMP	200000	95000	Renovation work	No quantifiable target	
d.	HP-II					
	a. Surface Water	60000	30450	GD,Raingauge installation	In Progress. No quantifiable target	
	b.Ground Water	40000	8608	Piezometer installation	In Progress. No quantifiable target	
	Sub-Total	1500000	907637			
6	State Fund					
a.	Major & Medium	500000	196726	Proj intiation activities	No quantifiable target	
b.	Minor (flow)	90000	73686	Irr.Potential(in ha)	3000	1893
c.	GWS&I	24000	15064	WT &WQ	No quantifiable target	
d.	FC & Drainage	690000	349149	Embankment improvement.	No quantifiable target	
	Sub-Total	130400.00	6346.25			
7	RR&R	800000	800000	Irr.Potential (in ha)	3000	8705
8	CAD&WM	760000	3801.04	Field Channel (ha)	33000	18324
				Field Drain (ha)	17600	4384
9	FMP	600000	293928	Water logged Area Retrieval (ha)	12000	2000
				Agril land protection(Ha)	10000	3000
10	Megalift	500000	000	Projects to be taken up (No)	20	-
	Total	24580000	12074440			

N.B. :

Shortfall in achievement may be attributed to PRIs election code of conduct, Rehabilitation and Resettlement issues, delay in Land Acquisition etc.

Chapter-V Financial Review

* * * * *

Financial outlay under Non-Plan, State Plan & Centrally Sponsored Plan in both revenue and capital account for the financial years 2010-11, 2011-12 & 2012-13 is given below.

Table-5.1

STATE PLAN (In TRS)

Sl. No	Major Head	Description	Accounts (2010-11)	B.E (2011-12)	R.E (2011-12)	B.E (2012-13)
1	2700	Major Irrigation	25136	21000	22100	20000
2	4700	Major Irrigation	9581792	11190000	8464732	9375000
3	2701	Medium Irrigation	-	-	-	8002
4	4701	Medium Irrigation	3756416	3879000	3364771	5483333
5	3451	Secretariat service	5423	10000	10000	10000
6	2702	Minor Irrigation	1311881	1644000	1124000	2151000
7	4702	Minor Irrigation	1222274	4380000	3132554	4967850
8	2705	CAD&WM	480428	760000	760000	860000
9	4711	FC & Drainage	774150	2700001	2260006	2840000
		Total	17157500	24584001	19138163	25715185

Table-5.2

NON-PLAN (In TRS)

Sl. No	Major Head	Description	Accounts (2010-11)	B.E (2011-12)	R.E (2011-12)	B.E (2012-13)
1	2059	Public Works(bldg)	39964	43125	43125	51750
2	3054	Road & Bridges	185729	201250	201250	241500
3	2700	Major Irrigation	2516747	3791371	3935008	4330255
4	2701	Medium Irrigation	616484	852910	942947	874989
5	2702	Minor Irrigation	1408586	1697532	1817535	1919272
6	2705	CAD&WM	72781	86720	86720	98966
7	2711	FC & Drainage	1070357	1118363	1118363	1285344
8	2070	Other Adm.Service	7979	10567	10567	10932
9	2230	Labor & Welfare	3838	3374	4574	4574
10	2801	Power	18633	33418	33419	33736
11	3056	Inland Water Transport	2385	2085	2085	2091
12	3451	Secretariat service	63857	86423	86673	95615
13	6702	Loans for MI	3000	-	-	-
		Total	6010330	7927138	8282269	8949024

Table-5.3

CENTRALLY SPONSERED PLAN (In TRS)

Sl. No	Major Head	Description	Accounts (2010-11)	B.E (2011-12)	R.E (2011-12)	B.E (2012-13)
1	2705	CAD&WM	148214	-	-	-
2	4702	Minor Irrigation	435545	-	-	-
3	4711	FC & Drainage	294094	-	-	-
		Total	877853	-	-	-

Chapter-VI Gender and SC/ST Budgeting

*** **

Gender Budgeting: The schemes implemented for development of water resources sector benefit the community as a whole. Therefore, Gender component is not captured.

SC/ST Budgeting:

Tribal Sub-Plan : As per 2001 census, the tribal population constitute 22.13% of the total population of the state. About 95% reside in rural areas and majority of workers are agricultural labourers. They are generally in a state of social, educational and economic backwardness. The objective of TSP is to uplift the socio-economic status of the tribal community. The State Government accord priority for bringing additional irrigation coverage in tribal areas. This would enhance the agricultural productivity of the tribal cultivators as well as agricultural labourers. The budget provision under TSP during 2012-13 under different schemes implemented through Department of Water Resources is given in the table below.

Table-6.1

Sl. No.	Sector/ Scheme	Total budget Provision (in TRs)	Out of which flow to TSP (in TRs)
1.	Major & Medium		
	a.EAP	2235000	180891
	b.AIBP	10500000	3837816
	c.RIDF	900000	130075
	d.State fund	1261335	253055
	Sub-Total	14896335	4401837
2.	Minor Flow		
	a.EAP	525000	150000
	b.AIBP	280000	150000
	c.RIDF	420000	150000
	d.RR&R	750000	300000
	e.State fund	90000	000
	f.CheckDam(Statefund &SCA)	1911350	520000
	g.Megalift	1500000	300000
	Sub-Total	5476350	1570000
3	Lift Irrigation		
	a.BKVY (RIDF)	1500000	300000
	b.BKVY (SCA)	100000	40000
	c.HCAD(RIDF)	20000	360
	Sub-Total	1620000	340360

Sl. No.	Sector/ Scheme	Total budget Provision (in TRs)	Out of which flow to TSP (in TRs)
4	CAD&WM	860000	357876
5	GWSI	22500	-
6	Flood control & Drainage		
	a.RIDF	1310000	18010
	b.FMP	330000	-
	c.State fund	1200000	-
	Sub-Total	2840000	18010
	Total	25715185	6688083

SC Sub-Plan : There are 93 scheduled caste (SC) communities in the state. As per 2001 census, the SC population constitute 16.53% of the total population of the state. About 88% reside in rural areas and majority of workers are agricultural labourers. They are generally in a state of social, educational and economic backwardness. The objective of SCSP is to raise the socio-economic status of the SC community and to reduce poverty. The State Government has given priority for bringing additional irrigation coverage for SC community. The budget provision under SCSP during 2012-13 under different schemes implemented through Department of Water Resources is given in the table below.

Table-6.2

Sl. No.	Sector/ Scheme	Total Budget Provision (in TRs)	Out of which flow to TSP (in TRs)
1.	Major & Medium		
	a.EAP	2235000	728488
	b.AIBP	10500000	1642104
	c.RIDF	900000	167475
	d.State fund	1261335	135230
	Sub-Total	14896335	2673297
2.	Minor Flow		
	a.EAP	525000	150000
	b.AIBP	280000	50000
	c.RIDF	420000	100000
	d.RR&R	750000	120000
	e.State fund	90000	000
	f.CheckDam(Statefund &SCA)	1911350	400000
	g.Megalift	1500000	200000
	Sub-Total	5476350	1020000

Sl. No.	Sector/ Scheme	Total Budget Provision (in TRs)	Out of which flow to TSP (in TRs)
3	Lift Irrigation		
	a.BKVY (RIDF)	1500000	200000
	b.BKVY (SCA)	100000	20000
	c.HCAD(RIDF)	20000	5270
	Sub-Total	1620000	225270
4	CAD&WM	860000	175412
5	GWSI	22500	-
6	Flood control & Drainage		
	a.RIDF	1310000	659000
	b.FMP	330000	152200
	c.State fund	1200000	611975
	Sub-Total	2840000	1423175
	Total	25715185	5517154

*** **